

2011. 11. 2

4<sup>th</sup> Asia Pacific RCEs Conference



*Designing the Future of Education*

# RCE Tongyeong: a recent update

Won J Byun



재단법인 통영시지속가능발전교육재단  
Tongyeong Education Foundation for sustainable development



# Land of Sea Tongyeong



# Tongyeong : Background

## Nature

526 Islands

Mild Climate

Abundant marine resources



## History

300 Tongjeyeong Culture



## Art & Culture

Birthplace of famous artists

Tongyeong International Music Festival

Intangible heritage



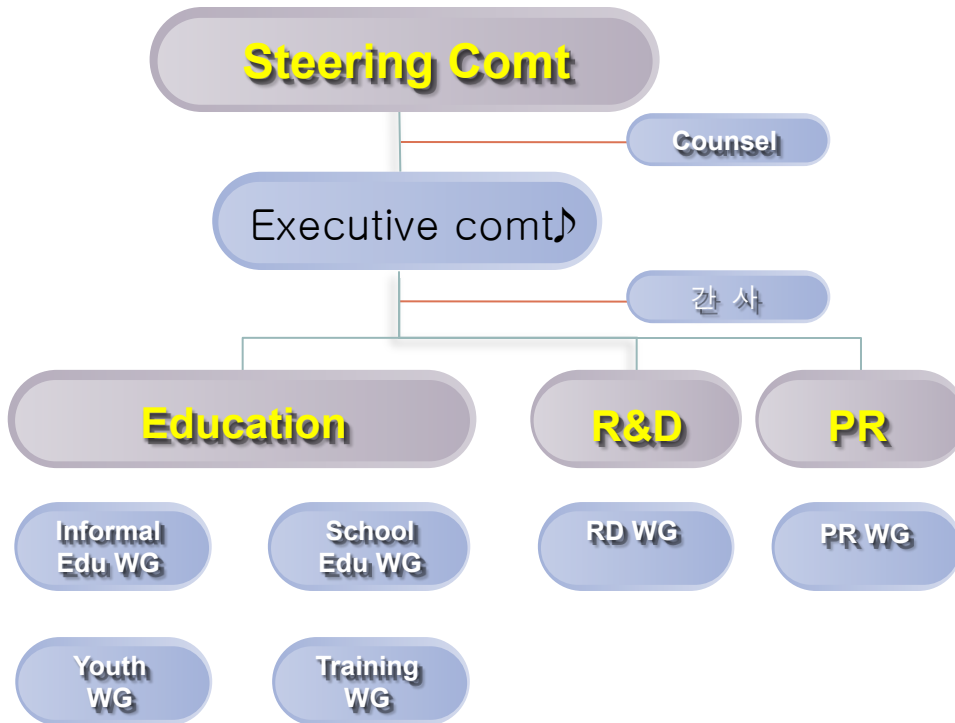
# RECENT PROGRESS : A FOOTPRINT



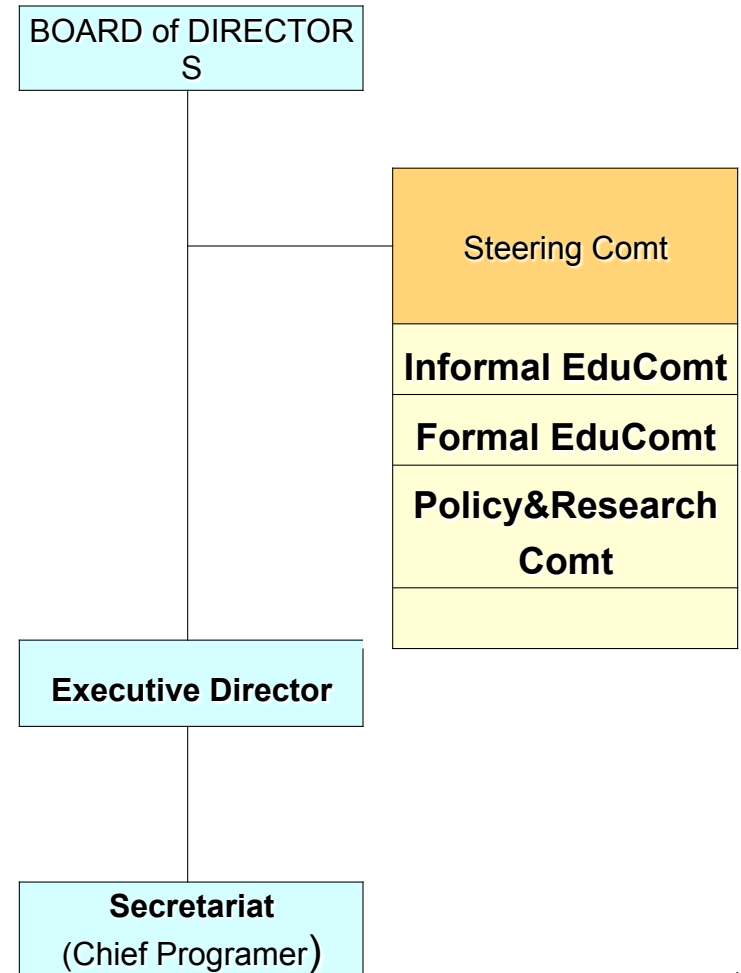
- ❖ Oct 2005 : Acknowledged as 8<sup>th</sup> RCE, UNU-IAS
- ❖ July 2007 : Designated as Lifelong Learning City, MoEducation
- ❖ Oct 2008 : 1<sup>st</sup> Asia Pacific RCEs Conference in Tongyeong
- ❖ Dec 2010 : Preparatory Meeting for RCE Tongyeong Foundation
- ❖ Jan 2011 : Establishment of Secretariat of RCE Foundation
- ❖ April 2011 : Establishment of RCE Tongyeong Foundation
- ❖ Sept 2011 : Ground-breaking of Sejahtra Centre& RCE Eco-Park

# CHANGE OF ORGANIZATION

## ❖ RCE Tongyeong



## ❖ RCE TY Foundation





# Informal Education Committee

: a network of 37 NGOs (self-governing rule / 6-month training prior to application to join / regular training / monthly meeting / joint ESD projects)



# RECENT PROJECT 1



- ❖ Governance through ESD: Tongjeyeong Project team
  - ❖ 14-year 60billionUS restoration project
  - ❖ 6-month policy research project assigned to RCE Informal Education Comt. by the Mayor





# Formal Education Committee

- a network of 36 schools+ 1 University(members: 50 teachers)
- 1 ESD Focal point Teacher in all 36 elementary~high schools
- Teacher training every 2months/ thematic group meetings









# Management of Hallyeohaesang National Park

2011. 11.



*Pitta bracyura*



*Corynactis* sp.



*Lutra lutra*



*Zostera marina*



*Corylopsis coreana*

## 2. Current Status

**20 National Parks**

Mountain Park : 16      Marine Park : 2  
Seashore Park : 1      Historic Park : 1

### • Area

Total	Land	Sea
6,579	3,899	2,680
(100%)	(59%)	(41%)

### • Land ownership

Type	Total	State-owned	Public-owned	Private-owned
Area	3,899	1,936	439	1,525
	(100%)	(50%)	(11%)	(39%)

### • Park Visitation

Year	2005	2006	2007	2008	2009
Visitors	22,940	21,033	30,669	30,110	35,507

(unit: thousand)



# Biological Resources

	Mammal	Birds	Amphibian, Reptile	Insects	Fresh water Fishes
<b>Animals</b> 1,391 spp.	25 spp.	122 spp.	20 spp.	1,610 spp.	24 spp.
	•Endangered animals – <i>Lutra lutra</i> (I), <i>Elaphe schrenckii</i> (I), <i>Falco peregrinus</i> (I), <i>Pitta nympha</i> (II), etc				
<b>Plants</b> 510 spp.	* Endangered plants– <i>Corylopsis gotoana</i> var. <i>coreana</i> (II) , <i>Milletia japonica</i> (II) , <i>Cymbidium macrorrhizum</i> (II), etc				
<b>Marine wild life</b> 846 spp.	*Invertebrates – 420spp. ( <i>Melithaea flabellifera</i> , <i>Rhizopsammia minuta</i> ,etc) *Marine fishes – 186spp. ( <i>Sebastes schlegelii</i> , <i>Acanthopagrus schlegelii</i> , <i>Spondyliosoma cantharus</i> , <i>Neoditrema ransonneti</i> , etc) *Others- 240spp.(Common Eelgrass, sea algae, etc)				



해양생물 및 양식장 피해♪



기름 범벅이 된 뽕논병아리♪

## ❖ Asia Pacific RCEs Fellowship

- ❖ Invitation to RCE members/researchers to stay in Tongyeong for 6-month research project of your proposal related to Asia Pacific RCEs
- ❖ 1<sup>st</sup> Period opening
  - ❖ Application : Nov 2011~ Dec 2011
  - ❖ Research period in Tongyeong : Early~mid 2012
  - ❖ Support from RCE Tongyeong : Roundtrip airfare, monthly living support 1,000USD/month, office space at RCE secretariat

## ❖ Tongyeong ESD International Forum 2011

- ❖ 8-9 Dec 2011, Tongyeong
- ❖ Theme: Asian path towards sustainability
- ❖ ESD good practice competition



A Step Together

RCE Tongyeong

*Designing the Future of Education*

**Khapkun Kap** 감사합니다.

[www.RCE.or.kr](http://www.RCE.or.kr)