



RCE Kitakyushu

<http://www.k-esd.jp>

Email: k-esd@k-esd.jp/ Tel : +81-93-93-661-2133

2-5-7 Higashida, Yahata-higashi, Kitakyushu 805-0071
Japan

Yukiko ODA

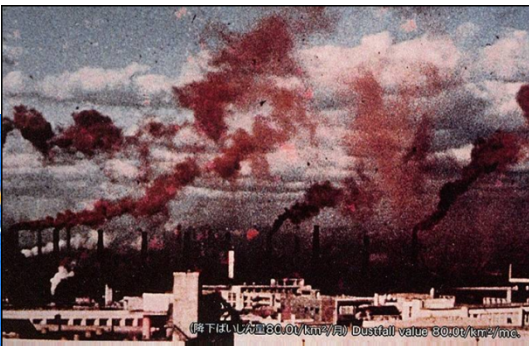
Chief researcher,

Kitakyushu Institute on Sustainability

E-mail: y.oda@ksks.info

Kitakyushu

- Kitakyushu is an industrial city located in western Japan.
- Kitakyushu has a history overcame industrial pollution in the 1960s in collaboration among citizens, industrial sectors and local government.





Vision of RCE Kitakyushu

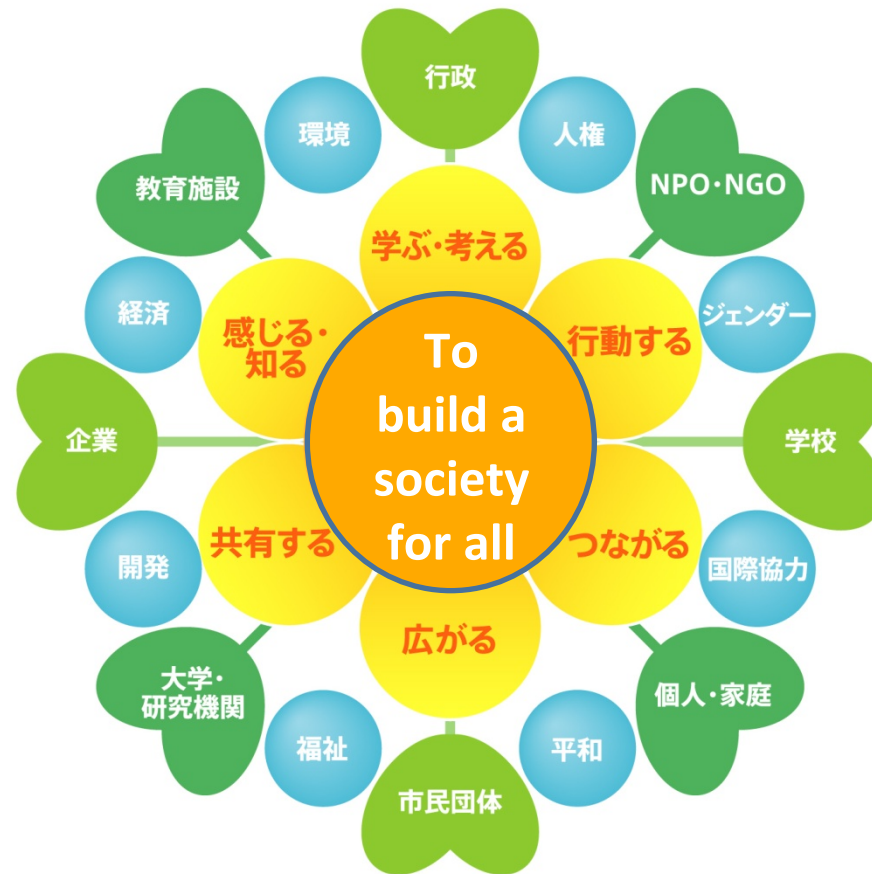
To integrate the perspectives of sustainability into all types of education and citizen's activities to realize a just and sustainable society based on the full understanding of the citizens and the collaboration among various stakeholders.

6 activities to achieve the vision of RCE Kitakyushu

(1) To feel
problems in
a daily life

(3) To take
actions to
solve
problems

(5) To spread
information
and connect
each other



(2) To study
ways to
solve the
problems

(4) To
network for
actions

(6) To share
experiences
and expand
network



Activities 2011

1. Promoting environmental activities
2. Networking and connecting various sectors through activities and events
3. Promoting the concept of SD to the society and raise public awareness on ESD and DESD through lectures, publication, study visits, ESD café and other activities
4. Supporting people who were affected by the 3.11 East Japan Great Earthquake Disaster
5. Raising awareness on gender sensitivity and human rights of vulnerable people
6. Exchanging ideas and experiences between Korean RCEs and RCE Kitakyushu members, especially the youth

1. Promoting environmental activities and reducing plastic bag use



2. Networking and connecting various sectors under the RCE Kitakyushu/Kitakyushu ESD Council



ESD Cafe



3. Raise public awareness on ESD and DESD through lectures, publication, study visits, ESD café, conducting surveys and other activities



Lectures

Green mapping
in Ainoshima



4. Supporting people who were affected by the 3.11 East Japan Great Earthquake Disaster

近代観測史上初めてと言われる地震と津波が発生し、加えて福島原発事故によって被害者が増大し、持続可能な社会づくりという観点から多くの問題点が投げかけられました。被災地の日でも早い再生を願って、被災地と遠く離れた北九州をつなぐ、私たちにできることは何かを見つめ直し、今後も長く支援し続け、より多くの人に支援の輪を広げることをめざして、今回のコンサートを開催します。

仙台広域圏ESD・RCE～北九州ESD・RCEをつなぐ 東日本大震災復興支援 トーク&チャリティコンサート

2011.12/12(月) 18:00 (17:30開場)
北九州市立男女共同参画センター・ムーブ 2階 ホール

前売券(当日) 完全自由席 一般13,000円(4,000円) 学生2,000円(3,000円)
 主催：北九州ESD協議会 共催：北九州市
 申し込み・お問い合わせ：北九州ESD協議会 TEL:093-841-2133 FAX:093-871-7782

仙台広域圏ESD・RCEから小金澤孝昭氏をお招きし、東日本大震災の状況や現状をご講演いただきます。北九州ESD協議会からは、チャリティコンサートの売上金から義援金として贈呈します。

小金澤 孝昭氏
 1962年東京都生まれ。1982年に宮城教育大学教育学部専任講師として着任し、1997年以降、教育学部ならびに大学院の教授として勤務している。また、宮城大学高等研究所の所長教授も兼務している。社会的活動としては、国連大学の協定するRCE仙台広域圏の運営委員長を務め、東日本大震災以降の復旧活動ならびに今後の復興の方向について地域や学校と連携して取り組んでいる。

A charity concert to raise funds to support women's groups and the reconstruction.

5. Raising awareness on gender sensitivity and human rights of vulnerable people through ESD



6. Exchanging ideas and experiences between Korean RCEs and RCE Kitakyushu



Exchange with Tongyeong





Plans for 2012

1. Promoting ESD through school education
2. Connecting ESD activities at school and community
3. Nurturing ESD coordinators, especially through training of existing leaders and interpreters for social education at community centers
4. Developing teaching materials for ESD at schools and communities
5. Collecting and sharing good practices of ESD activities among RCE Kitakyushu and nation wide
6. Conducting surveys on ESD for monitoring
7. Provide lectures at universities and community centers



National/international Networks

National level:

1. ESD Japan
2. Japanese RCE network

International level:

1. Exchange program with RCE Tongyeong
2. Asia-Pacific RCE Meeting
3. Global RCE Conference



**RCE Kitakyushu will continue to work
to build a sustainable society**

Thank you