

RCE Chubu and Bio-region Based ESD

**Toward 2014 World Conference on ESD
(End of the Decade Conference, UNESCO)**

Reita Furusawa

- **Lecturer, Chubu Institute of Advanced Studies/International ESD Center,
Chubu University**
- **Secretariat, RCE Chubu**

2011/11/2



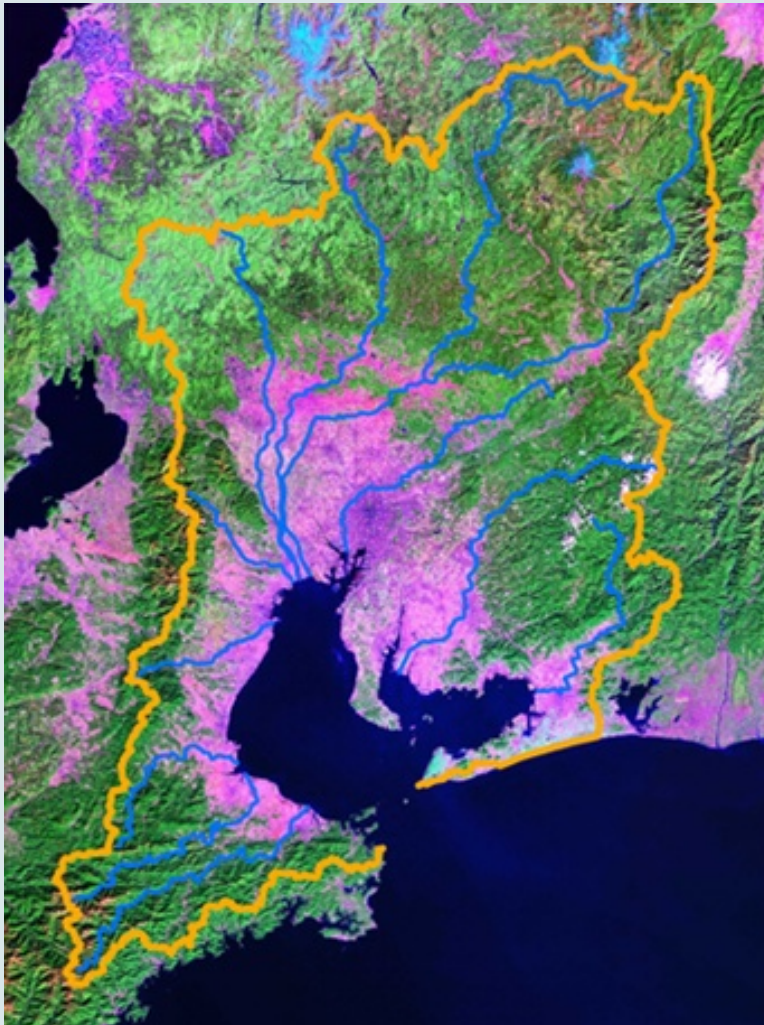
RCE Chubu (Central Japan)



2007(Oct) Acknowledged by UNU.
2008 (Jan) Established RCE Chubu

Chubu Area and the Environment

Ise Mikawa Bay



Natural Environment

Mountains: Hida, Kiso, etc.
Rivers: Kiso, Nagara, etc.
Bays: Ise Bay, Mikawa Bay

Social Environment

Urbanization: Nagoya city
Depopulation: rural areas
Multi-Cultural: foreign – residents (foreign workers)

Economic Environment

Manufacturing : Toyota, etc.
Commerce: Nagoya city
Agriculture & Forestry: timber products , Flowers, etc.

RCE Chubu Network

Universities

Aichi Gakuin University
Aichi Prefectural University
Chubu University
Nagoya Institute of Technology
Nagoya City University
Nagoya University
Gifu University
Nihon Fukushi University
Meijo University
Mie University

High and Junior High School

Chubu University Daiichi High School
Haruhigaoka High School
Haruhigaoka Junior High School

Research Institutes

San-En-Nanshin Center for Regional Collaboration, Aichi University
National Institute for Fusion science
Kinsyozan Fossil Association
Association of Ise Mikawa bay basins studies Chubu University
Association of Multi-cultural and Gender equality studies Chubu University

Administrative Institutions

Aichi Prefectural Government
Gifu Prefectural Government
Mie Prefecture
Kasugai City
Nagoya City Hall
Chubu Regional Environment Office
Chubu Bureau of Economy, Trade and Industry METI
"Chubu District Transport Bureau ,Ministry of Land,
Infrastructure, Transport And Tourism "
"Chubu Regional Bureau, Ministry of Land,
Infrastructure, Transport And Tourism "
Tokai Regional Agricultural Administration Office,
Ministry of Agriculture, Forestry and Fisheries
Environmental Partnership Office Chubu
Nagoya Open university of the Environment

NGOs and NPOs

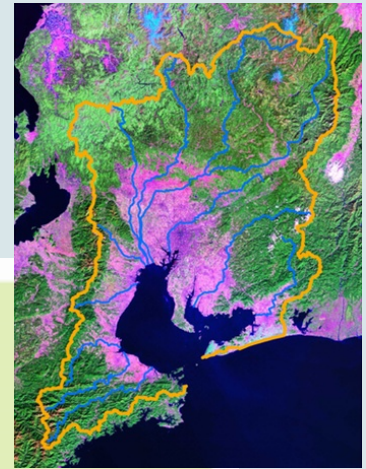
Children's Club for Love The Earth
EXPO 2005 Volunteer Center
Ai-Chikyu Platform
ASK-NET
IseMikawa.net
Eco-Design Forum for Civic Society
Eco Platform TOKAI

Kachigawa-Ekimae Shopping Street
Promotion Association
Citizens Environmental Foundation
Gifu NPO Center
Gifu Industrial Hemp Association
International Green Citizen Association
(IGCA)
Alaska, its spirits and Michio Hoshino
Support Center for Sustainable Regional
Design
DEE21(Digital Economy & Enterprise for
the 21st. Century)
Nagoya International Center
Nagoya UNESCO
Nissin Nature Observation Association
Japan Oldest Stone Museum
Nature Club Tokai
Fujimae Ramsar Society
Yamazakigawa River Green Map
Chubu ESD-RCE Promotion Network
(CERP)

RCE Chubu
Commission

Secretariat
Chubu University

RCE Chubu and the Region



Ise-Mikawa Watershed (The rivers empty into Ise-Mikawa Bay)

- Miya River
- Kushida River
- Kumozu River
- Nakano River
- Suzuka River
- Ibi River
- Nagara River
- Kiso River
- Shonai River
- Yahagi River
- Toyo River

Themes

- forestry
- clean energy
- rural depopulation
- agriculture
- water / river
- manufacturing
- multicultural harmony
- gender equality
- child-care / aging
- ...
- ocean
- international cooperation

Ise-Mikawa Bay

Pacific Ocean



Chubu Area and International Events

2005

2005 Japan International Exposition, Aichi Prefecture



2010

CBD (Convention on Biological Diversity) COP10, Nagoya City, Aichi Prefecture



World Conference on ESD,
End of the Decade
meeting,
Nagoya City, Aichi
Prefecture

2014

2005~2014 : UN Decade of ESD (D-ESD)

2014 World Conference on ESD (UNESCO)

2009

The *UNESCO World Conference on Education for Sustainable Development – Moving into the Second Half of the UN Decade (Mid Decade Conference)*

2009, 31 March - 2 April **2009 Bonn**

the conference aimed to highlight the relevance of ESD to all of education; promote international exchange on ESD, especially between countries of the North and the South; carry out a stock-taking of the implementation of the UN Decade, and develop strategies for the way ahead.



500 Participants

2014 World Conference on ESD (UNESCO)

2014

World conference on ESD,
End of the decade
meeting,
Nagoya City, Aichi
Prefecture

■ Aichi Pref. & Nagoya City (Main Venue)

■ Okayama City



- Hokkaido Pref. & Sapporo City
- Hamamatsu City
- Aichi Pref. & Nagoya City
- Okayama City
- Kobe City
- Kitakyushu City
- Oita Pref.



CBD COP10 Aichi Nagoya 18~28th Oct 2010



- ◎ Nagoya Protocol on ABS
- ◎ Aichi Target (Post 2010 Target)
- ◎ UN Decade of Biodiversity (2011-2020)



RCE Activities during the COP10



生物多様性条約締結会議(COP10) 生物多様性交流フェア・フォーラム
Biodiversity and ESD Education for Sustainable Development

生物多様性とESD (持続可能な発展のための教育)
Biodiversity and ESD Education for Sustainable Development

プログラム
15:30-17:30 (2010/10/20) 大会場
生物多様性保全のためのESD (持続可能な発展のための教育)が果たす役割 - フォーラム
- 生物多様性条約とESD (持続可能な発展のための教育)の連携
- Opening: 15:30-15:35
祝詞の朗読 並井 寿夫 中野 誠 及び RCE Chubu 代表
Opening Remarks About Biodiversity Chair Persons of RCE Chubu
- Session 1: 15:35-15:45
ESDと生物多様性
- Session 2: 15:45-16:00
ESDと生物多様性
- Session 3: 16:00-16:15
ESDと生物多様性
- Session 4: 16:15-16:30
ESDと生物多様性
- Session 5: 16:30-16:45
ESDと生物多様性
- Session 6: 16:45-17:00
ESDと生物多様性
- Session 7: 17:00-17:15
ESDと生物多様性
- Session 8: 17:15-17:30
ESDと生物多様性

お問い合わせ先: 事務局 中野 誠 RCE Chubu (Secretariat: Sota Furumasa) / 事務局 中野 誠 RCE Chubu (Secretariat: Sota Furumasa)
TEL: 0566-55-1111 (EX: 4624) / Mobile: 090-4155-2066 / E-mail: info@cop10-aichi-nagoya.jp

国連「持続可能な開発のための教育 (ESD)の10年」2005～2014

生物多様性保全のために ESD (持続可能な発展のための教育) が果たす役割 The Roles of ESD for Biodiversity Conservation

～世界と日本のRCE (国連大学がつなぐESD地域拠点)の取り組み～
-The Networking of UNU's Regional Centres of Expertise on Education for Sustainable Development-

10/20 15:30～17:30 ① フォーラム Forum

場所: 生物多様性交流フェア・フォーラム会場-名古屋学院大学体育館・大会場
主催: RCE中部 (中部ESD拠点)、RCE仙台広城圏、RCE横浜、RCE兵庫・神戸、RCE岡山、RCE北九州、国連大学高等研究所 (UNU-IAS) グローバルRCEサービスセンター
Venue: Nagoya Gakuin University Gymnasium (Large Hall) - Interactive Fair for Biodiversity
Presented by: RCE Chubu, RCE Greater Sendai, RCE Yokohama, RCE Hyogo-Kobe, RCE Okayama, RCE Kitakyushu, United Nations University-Institute of Advanced Studies (UNU-IAS) Global RCE Service Centre

ワークショップ「生物多様性とESD～今後の連携に向けて～」
Biodiversity and ESD -for Further Collaboration- (workshop)

10/20 18:00～19:30 ② ワークショップ Workshop

場所: 名古屋学院大学体育館・小会場1
Venue: Nagoya Gakuin University Gymnasium (Small Hall 1) - Interactive Fair for Biodiversity

本会議場CEPAと
同時開催決定!!

※ Language: Japanese with simultaneous English interpretation

Convention on Biological Diversity United Nation's Decade of
Communication Education for Sustainable Development
Public Awareness **CEPA * ESD** 2005 2014



Shounai River Basin and biodiversity

-Forest Health Check-up:

A survey and study project on the forests at the headwaters of the Toki-Shonaigawa river, relying on the efforts of local residents, with the aim of grasping current forest conditions in a scientific manner.



Gifu Pref.

Shounai River Basin and biodiversity

-Noda Farm Conservation:
Noda Farm is a symbolic example of urban agriculture in Nagoya City. It is threatened its sustainability due to the reconstruction plan in Shidami area. Members of RCE Chubu is supporting seeking regional natural/cultural resources and making an alternative plan.

志段味野地区の地域資源

志段味野地区に棲む「名古屋市の絶滅のおそれのある野生生物」

【植物】	【昆虫】	【鳥類】
・オダマキソウ	・ダイコクサ	・アオダイショウ
・アサギソウ	・コメムシ	・ウツリ
・マダモトクサ	・ヒメアザミ	・キジ
・クサノオ	・マダモトクサ	・アサギ
・オダマキソウ	・トノサマガシ	・カササギ
・オダマキソウ	・オダマキソウ	・ニホヒナヘビ
・オダマキソウ	・オダマキソウ	・クササメ
・オダマキソウ	・オダマキソウ	・イナガ
・オダマキソウ	・オダマキソウ	・オオウグイス
・オダマキソウ	・オダマキソウ	・オオウグイス
・オダマキソウ	・オダマキソウ	・オオウグイス

※絶滅のおそれのある野生生物

※絶滅のおそれのある野生生物

※絶滅のおそれのある野生生物



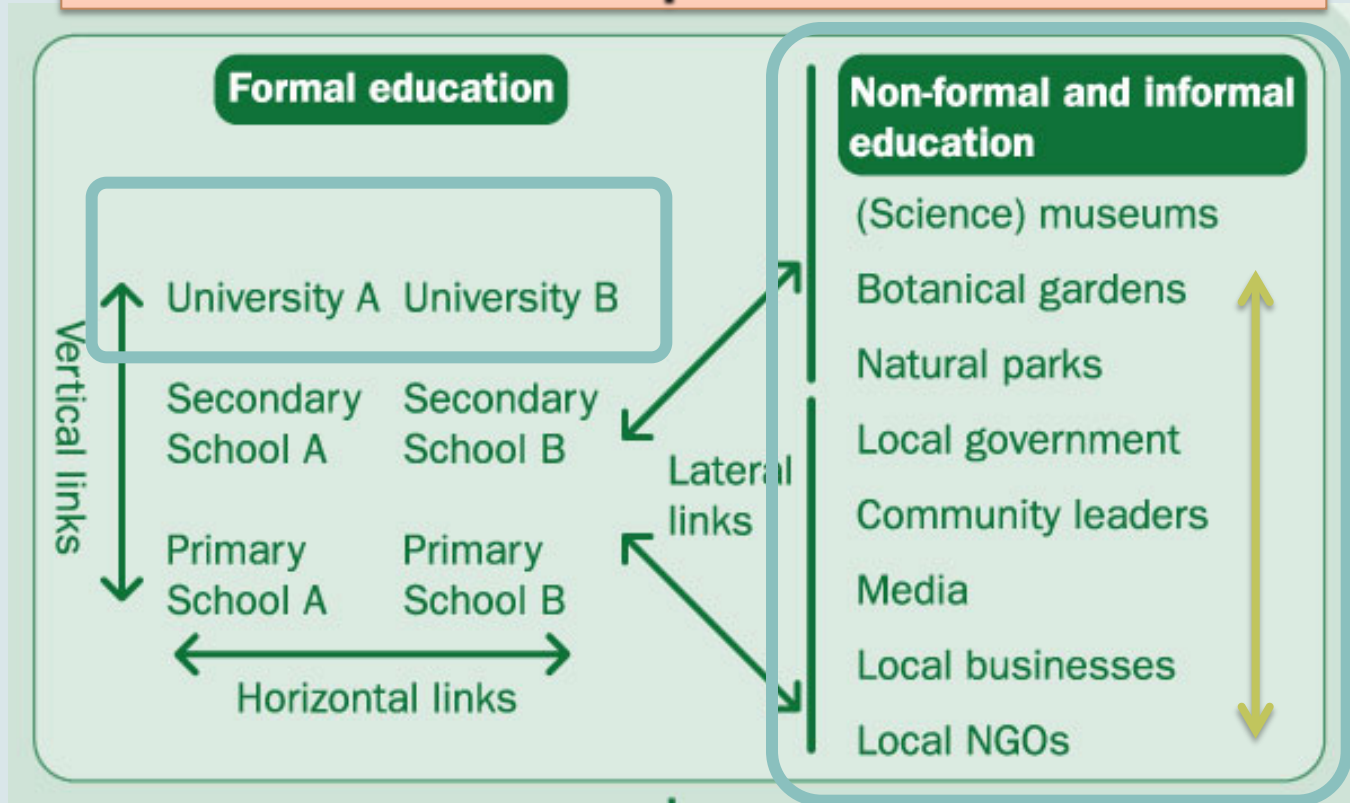
Shounai River Basin and biodiversity

-Fujimae Tidal Flat Conservation:
Fujimae-Higata is a tidal flat at river mouth of Shonai River, Shinkawa River and Nikko River that flow into the port of Nagoya.
This site is one of the staging sites of East Asia - Australia Flyway. A lot of migratory shorebirds, ducks and herons also use this site as feeding and resting area. The number of shorebirds that visit this site is one of the largest in Japan. So, Fujimae-Higata had been registered in "Ramsar Convention" on November 18, 2002.



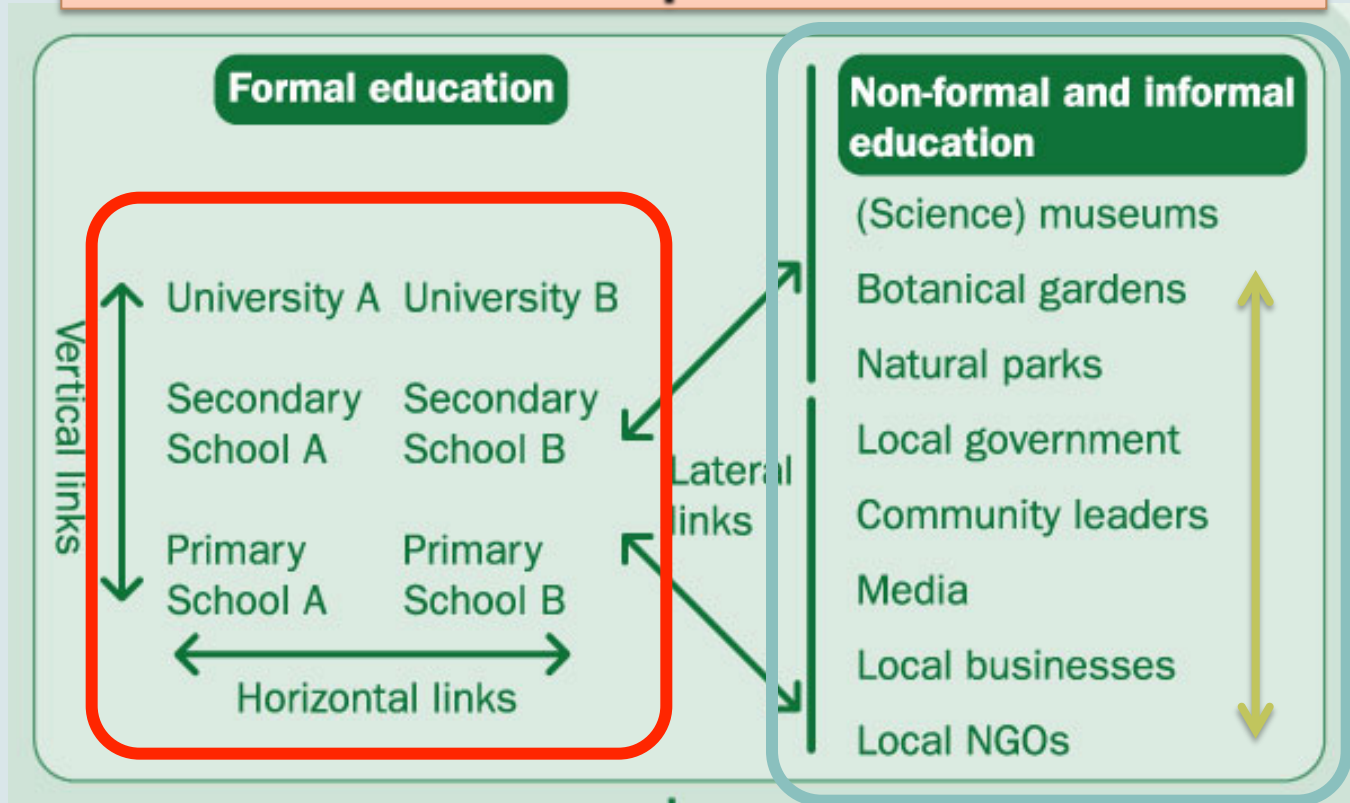
<http://minnanomirai.asablo.jp/blog/2009/06/06/4350394>

RCE's Concept of Education



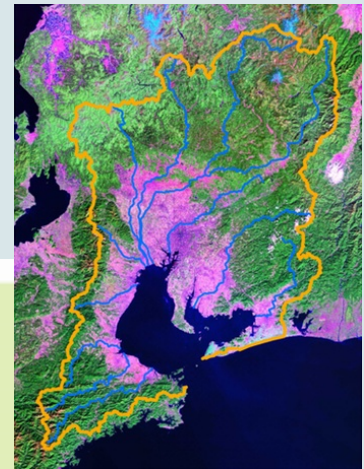
An RCE is a network of existing formal, non-formal and informal education organisations, mobilised to deliver education for sustainable development (ESD) to local and regional communities. A network of RCEs worldwide will constitute the Global Learning Space for Sustainable Development. RCEs aspire to achieve the goals of the [UN Decade of Education for Sustainable Development](#) (DESD, 2005-2014), by translating its global objectives into the context of the local communities in which they operate.

RCE's Concept of Education



An RCE is a network of existing formal, non-formal and informal education organisations, mobilised to deliver education for sustainable development (ESD) to local and regional communities. A network of RCEs worldwide will constitute the Global Learning Space for Sustainable Development. RCEs aspire to achieve the goals of the [UN Decade of Education for Sustainable Development](#) (DESD, 2005-2014), by translating its global objectives into the context of the local communities in which they operate.

Bio-region ESD Lecture Series



Ise-Mikawa Watershed (The rivers empty into Ise-Mikawa Bay)

Miya River Kushida River Kumoju River Nakano River Suzuka River Ibi River Nagara River Kiso River Shonai River Yahagi River Toyo River

Themes

forestry

clean energy

rural depopulation

agriculture

water / river

manufacturing

multicultural harmony

gender equality

child-care / aging

...

ocean

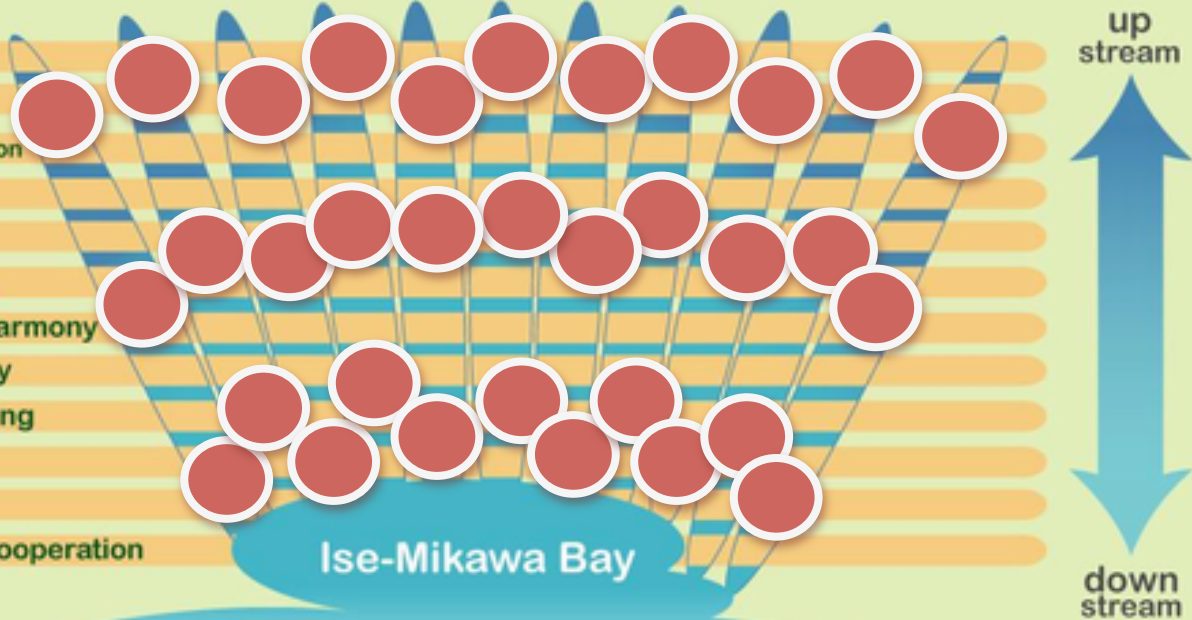
international cooperation

Ise-Mikawa Bay

Pacific Ocean

up
stream

down
stream



Developing Strategies of for 2014

■ How we put the outcomes of RCE activities to the world conference on ESD (organized by UNESCO) as an input?

- Analyzing each RCE's activities
- Domestic and regional communication
- Total wrap-up of RCE initiative

→ Communication with UNESCO and etc.

→ 2014 World Conference on ESD

→ post DESD (2015~)

reitajapan@isc.chubu.ac.jp



Shounai River Basin and biodiversity

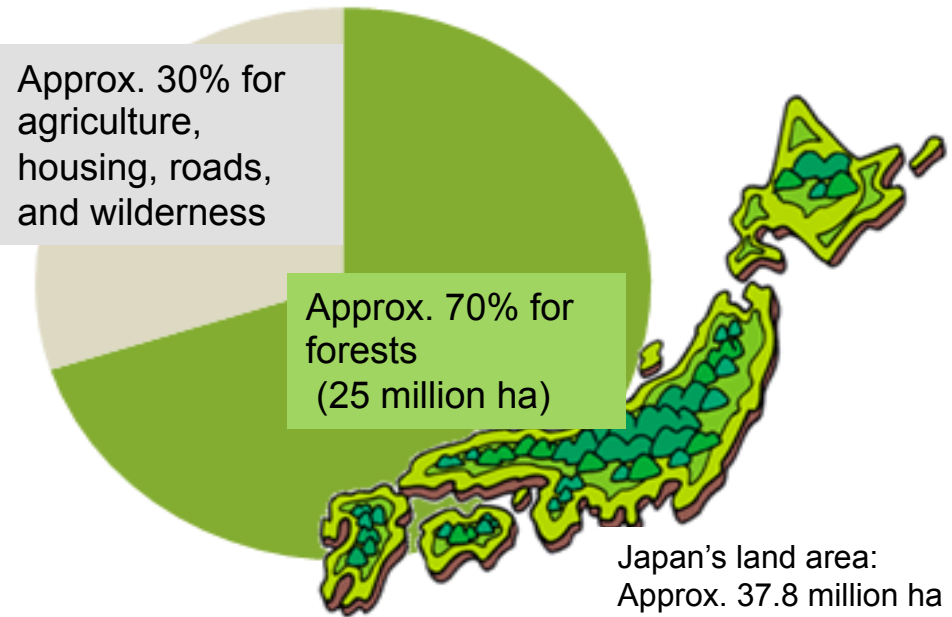
-Forest Health Check-up:

A survey and study project on the forests at the headwaters of the Toki-Shonaigawa river, relying on the efforts of local residents, with the aim of grasping current forest conditions in a scientific manner.



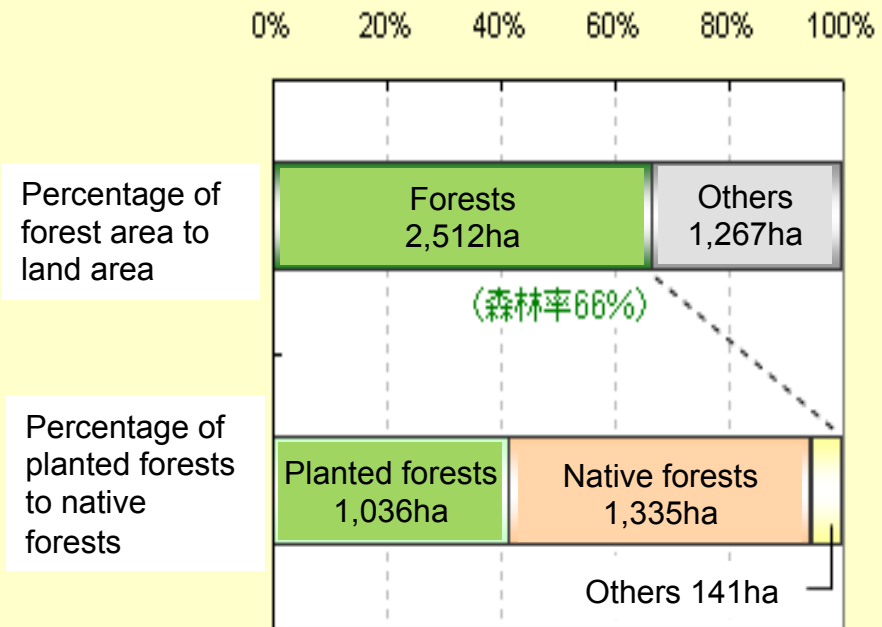
Japan's Forests

Forest coverage rate (percentage of forest area) is **approx. 70%**.



* World's average forest coverage rate is **30%**.

Japan's Forest Category



Planted forests account for 40% of Japan's forests.

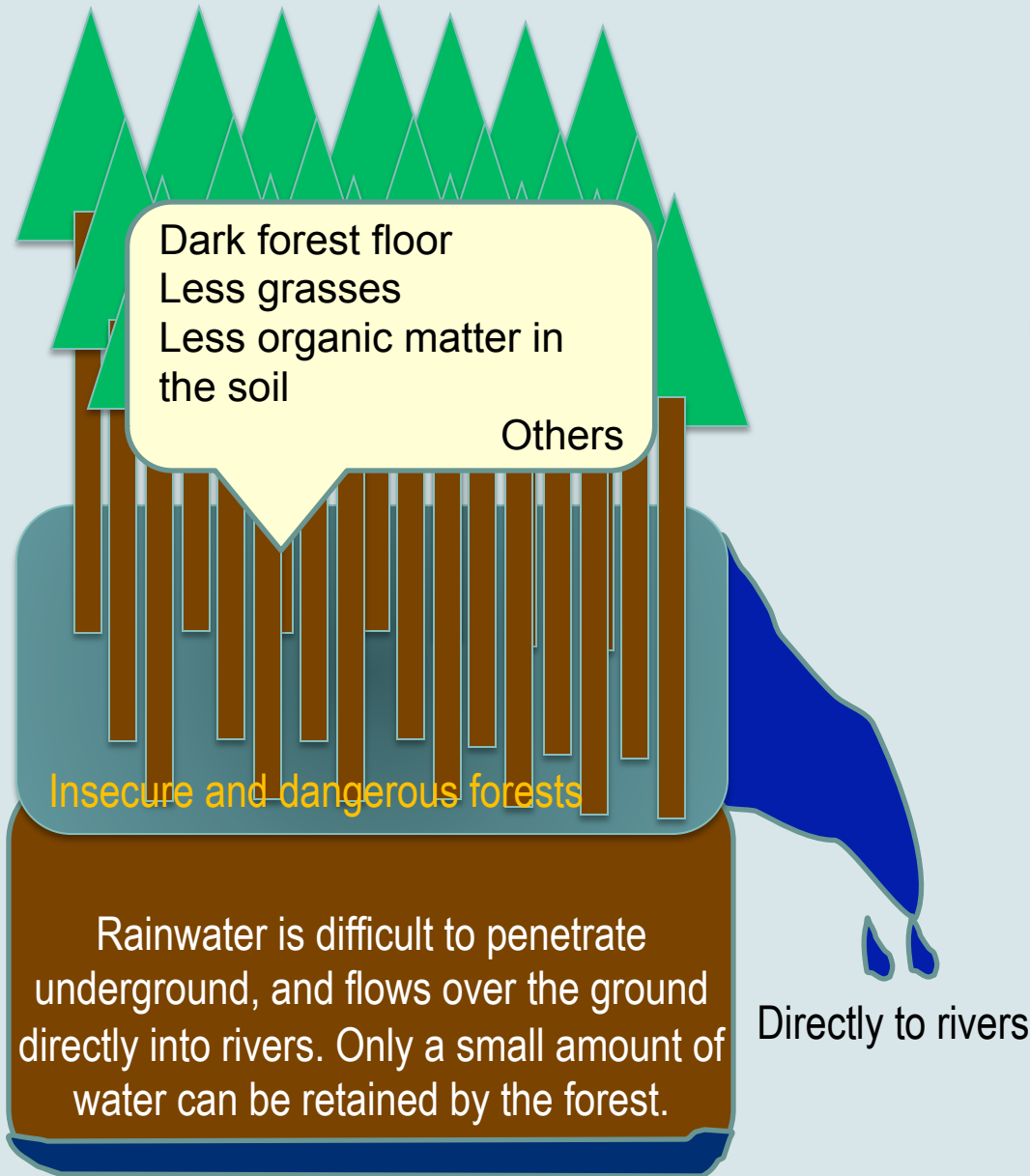
The forestry industry has been on the decline since **timber imports were liberalized** in 1964. Although trees were planted thanks to **the government's afforestation project** in 1954, most of them have **been unattended**. Without being thinned for about 40 years, these planted trees have become overgrown. As a result, one out of every five people now suffers from **hay fever** in spring due to the large amount of pollen from trees such as the cedar and Japanese cypress.



The trees are tall but thin as they are growing thickly together. This picture shows the typical condition of unattended planted forests.

Planted forests **safe and secure for people**

(Forests favorable for rainwater infiltration and resistant to floods)



Forests in the Upstream Basin

Landslide occurring



Source: Material prepared by the investigation team of Japan Society of Civil Engineers (Upper Yahagi River)

Forests in the Upstream Basin



Landslide occurring in each valley



Tokai Rainstorm in Sept. 2000

Hit Tokai Region, especially Nagoya City (Aichi, Gifu, and Mie Prefs.)

Caused by the autumn rain front and Typhoon No. 14.

Rainfall per night: About half of the annual rainfall

Total rainfall: Max. 589 mm

Rainfall per hour: Max. 114 mm/h

Flood damage and landslides occurred.

Picture of a city in the downstream basin



Death toll: 10 people
Minor and sever injury toll: 115 people
Flooding above floor level: 22,894 houses
Flooding below floor level: 46,943 houses

Forest Health Check in the Headwater Basin of the Toki and Shonai Rivers

Investigation:

(Health index)

- Investigation of vegetation
- Investigation of denseness
- Measurement of infiltration capacity



Report:

- Scientific assessment by researcher group
- Annual report meeting and report issuance
- Information exchange with other areas



Forest Health Check Reports

Continue annual forest health checks for 10 years
Objective: **Understand the current** situation of planted forests in the headwater basin

Deterioration due to poor management is the cause of soil runoff, landslides, and floods.

Cooperation between civic groups, ordinary citizens, researchers, and government

Understand the current situation by conducting scientifically-based investigations in many locations, and use the information to determine countermeasures.

- **Inform** as many people as possible about **the problems**
- Get as many **contributors** as possible to resolving problems
- Develop **next-generation** human resources



Reception



Investigation

Forests conservation, Students' initiative, Cooperation, Local revitalization
Specialized knowledge and research, Leading to sustainable development, Learning with each other among different generations



Workshop



Goheda rice cakes

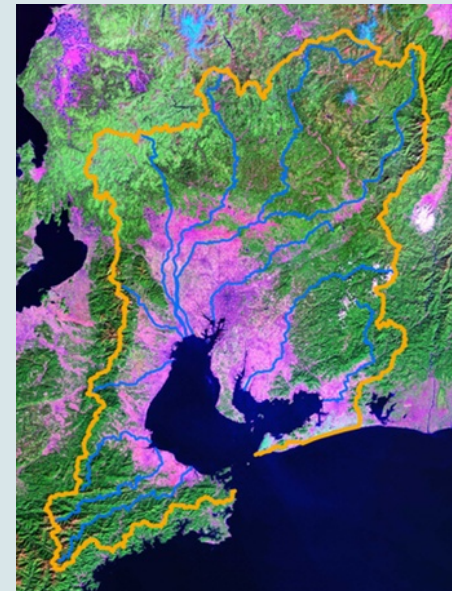
COP10 Satoyama Lunchbox

COP10 Satoyama Lunchbox

<From Satoyama in Ise-Mikawa Bay watershed>

- The bounties of Satoyama
- Cooking ingredient from Ise-mikawa Bay watershed

Presented by : Ministry of the Environment of Japan (MOEJ) / United Nations University Institute of Advanced Studies (UNU-IAS)
Planning Supported by : RCE Chubu
Cooked by: Meitetsu Grand Hotel
"Oriental White Stork" Organic Rice is Donated by "The farming to call back the Konotori of Association" in Echizen City, Fukui



COP10 Satoyama Lunchbox and Ise-Mikawa Bay watershed

里山弁当 Satoyama Lunchbox

お品書き Menu

★ = Non-Vegetarian Food

一、おにぎり三種 (福井県越前市コウノトリを呼び戻す農法米と愛知県美濃町野間の板海苔)
Three Rice Balls (The "Oriental White Stork" Organic Rice in Echizen City, Fukui and Seaweed from Noma, Mifuma, Aichi)

うめぼしのおにぎり (三重県熊野市)

Pickled Plum Rice Ball (Kumano, Mie) *WARNING! Sour and Salty!

ぶなしめじと椎茸の炊き込み御飯のおにぎり (岐阜県高山市・恵那市)

Mushroom (Buna-Shimeji and Shiitake) Rice Ball (Takayama/Ena, Gifu)

小女子山椒煮のおにぎり (愛知県師崎港)

Small Fish (Komago) Rice Ball (Morozaki, Aichi) ★

一、奥三河鶏の八丁味噌漬け (愛知県奥三河高原の鶏と岡崎市の八丁味噌) ★

Chicken (Okumikawa-Kogen) with Miso Sauce (Okazaki, Aichi) ★

一、大浅利のはんぺん (愛知県伊良湖港) ※伊良湖産天然鯛すり身使用

Giant Clam in a Sea Bream Fish Cake (Irago, Aichi) ★

一、栗の甘露煮 (岐阜県関市)

Stewed Chestnut in Soy Sauce and Sugar (Seki, Gifu)

一、里芋の田舎煮 (岐阜県美濃加茂市)

Country Style Boiled Taro (Minokamo, Gifu)

一、大根の風呂炊き甘味噌かけ (岐阜県ひるがの高原)

Boiled Radish (Hirugano Kogen, Gifu) with Sweet Miso Sauce (Okazaki, Aichi)

一、甘酢蓮根 (愛知県立田村)

Sweet and sour lotus (Tatsuta-Mura, Aichi)

一、守口大根 (愛知県丹羽郡大口町)

Pickled Radish (Oguchi-Cho, Aichi)

竹皮 (岐阜県恵那市)

Bamboo Leaf for Wrapping (Ena, Gifu)

竹筒 (愛知県豊田市長助)

Bamboo Cup (Asuke, Toyota, Aichi)

割り箸 (岐阜県恵那市の杉岡伐材) ※PO法入土岐川・庄内川サポートセンター)

Chopsticks (made of woods thinned from forests in Ena,

Gifu by NGO: Toki/Shonai River Support Center)

お品書き和紙 (岐阜県美濃市の美濃和紙)

Menu Paper (Mino Japanese Paper, Mino, Gifu)



提供：環境省・国連大学高等研究所

Presented by: Ministry of the Environment of Japan (MOEJ) / United Nations University Institute of Advanced Studies (UNU-IAS)

企画協力：RCE中部 (中部ESD拠点：国連大学認定世界77箇所のESD〈持続可能な開発のための教育〉地域拠点のひとつ)

Planning Supported by: RCE Chubu (One of 77 UNU's "Regional Centres of Expertise on Education for Sustainable Development" in the world)

制作：名鉄グランドホテル

Cooked by: Meitetsu Grand Hotel

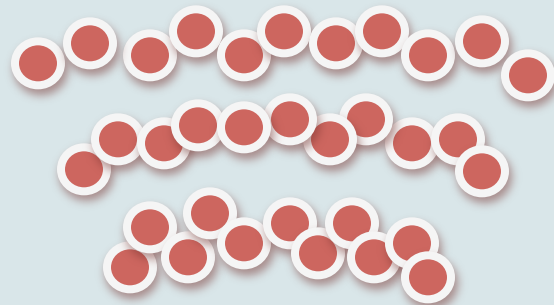
協賛：コウノトリ呼び戻す農法研究会

"Oriental White Stork" Organic Rice is Donated by "The farming to call back the Konotori of Association" in Echizen City, Fukui

※ 里山の恵みだけで作った里山弁当から出る廃棄物は、里山で堆肥にして土に戻しますので、収集にご協力ください。

* As these all organic ingredients and natural packages will be composted to a sustainable Satoyama landscape, we thank you for your cooperation in collecting your containers.





COP10 Satoyama Lunchbox

~ *The Gustatory Declaration of Biodiversity Conservation* ~



COP10 Satoyama Lunchbox and Ise-Mikawa Bay watershed



COP10 Satoyama Lunchbox and Ise-Mikawa Bay watershed

Packages

- *Bamboo Leaf for Wrapping (Ena, Gifu)*
- *Bamboo Cup (Asuke, Toyota, Aichi)*
- *Chopsticks (made of woods thinned from forests in Ena, Gifu by NGO: Toki/Shonai River Support Center)*
- *Menu Paper (Mino Japanese Paper, Mino, Gifu)*

** As these all organic ingredients and natural packages will be composted to a sustainable Satoyama landscape, we thank you for your cooperation in collecting your containers.*

COP10 Satoyama Lunchbox and Ise-Mikawa Bay watershed

▪ Noda Farm



Thematic groups

- Health and ESD (Catherine Matheson, RCE-Sudbury, Zainal Sanusi, RCE Penang) (Aqualab)
- Biodiversity, Ecosystems & ESD (André Champoux, RCE - Montreal, Reita Furusawa, RCE –Chubu, Shyamala Mani, RCE – Kodagu, Yoshi Natori, IAS-UNU) (Room Connexion)
- SCP (Zinaida Fadeeva, & Arimar Vieira, IAS-UNU, Jos Eussen, RCE-Rhine-Meuse) (Arts & Craft)
- Role of Higher Education Institutions (HEIs) for ESD (Kiran Chhokar, RCE – Samara, Jim)
- Youth (Jos Hermans, RCE Rhine-Meuse, Eko Ernada, RCE – East Kalimantan, Mandla Mlipha, RCE - Swaziland) (Conference Room)
- Better Schools for ESD (Okorie Okoro, RCE – Lagos, Chuck Hopkins, York University) Room Connexion)
- E-Learning (Anjeela Jokhan, RCE – Pacific, André Champoux, RCE - Montreal) (Aqualab)
- Poverty & Environment (Ali Bukar, RCE – Kano, Zinaida Fadeeva, IAS - UNU) (Planet Bucky)
- Climate change (Lyle Benko, RCE - Saskatchewan) (Arts & Craft Room)

Objectives of DESD

- Give an enhanced profile to the central role of education and learning in the common pursuit of sustainable development.
- Facilitate links and networking, exchange and interaction among stakeholders in ESD.
- Provide a space and opportunity for refining and promoting the vision of, and transition to sustainable development - through all forms of learning and public awareness.
- Foster increased quality of teaching and learning in education for sustainable development.
- Develop strategies at every level to strengthen capacity in ESD.

(UNESCO DESD Draft International Implementation Scheme (IIS), p.4)

United Nations University's RCEs

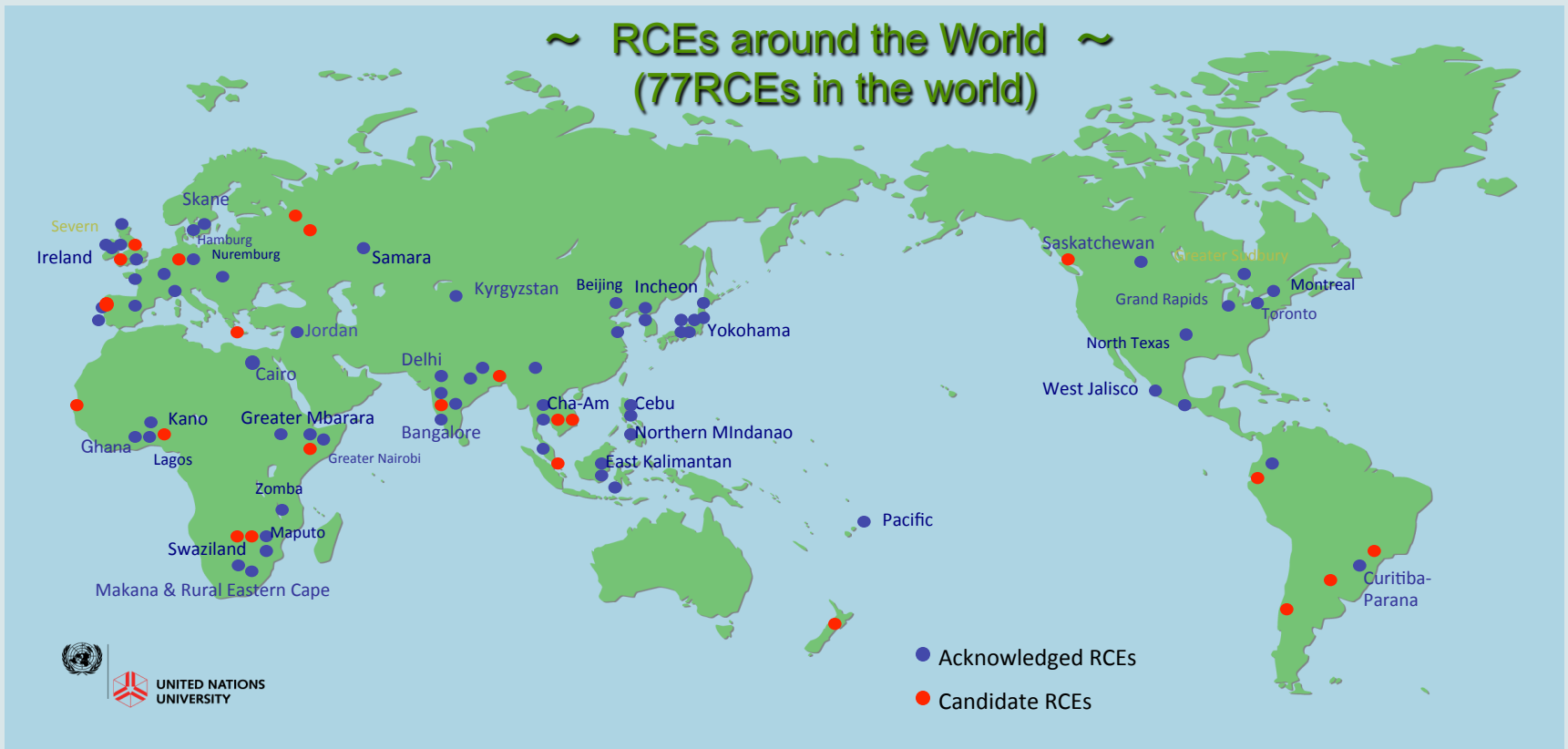
An RCE is a network of existing formal, non-formal and informal education organisations, mobilised to deliver education for sustainable development (ESD) to local and regional communities.

Core elements of an RCE

An RCE should have four elements:

- 1. Governance - addressing issues of RCE management and leadership**
- 2. Collaboration - addressing the engagement of actors from all levels of formal, non-formal and informal education**
- 3. Research and development - addressing the role of research and its inclusion in RCE activities, as well as contributing to the design of strategies for collaborative activities, including those with other RCEs**
- 4. Transformative education - contributing to the transformation of the current education and training systems to satisfy ambitions of the region regarding sustainable living and livelihood.**

~ RCEs around the World ~ (77RCEs in the world)



● Acknowledged RCEs
● Candidate RCEs

Acknowledged RCEs

Europe

- Sweden
- Skane
- UK
- East Midlands
- Severn
- North East
- Yorkshire & Humberside
- Ireland
- Germany
- Hamburg
- Nuremburg
- Munich
- Netherlands
- Rhine-Meuse
- Spain
- Barcelona
- Portugal
- Creias-Oeste
- Porto Metropolitan Area
- Southern North Sea
- Austria
- Graz-Styria
- Russia
- Samara

Asia-Pacific

- Kyrgyzstan
- Kyrgyzstan
- Japan
- Greater Sendai
- Yokohama
- Chubu
- Hyogo-Kobe
- Okayama
- Kitakyushu
- Korea
- Incheon
- Tongyeong
- China
- Beijing
- Anji
- Pacific
- Pacific
- India
- Guwahati
- Delhi
- Lucknow
- Pune
- Kodagu
- Bangalore
- Philippines
- Cebu
- Northern Mindanao
- Ilocos
- Thailand
- Cha-Am
- Trang
- Malaysia
- Penang
- Indonesia
- East Kalimantan
- Yogyakarta
- Bogor

Middle East & Africa

- Jordan
- Egypt
- Cairo
- Nigeria
- Kano
- Lagos
- Ghana
- Kenya
- Greater Nairobi
- Kakamega-Western Kenya
- Uganda
- Greater Mbarara
- Malawi
- Zomba
- Mozambique
- Maputo
- Swaziland

South Africa

- Kwa-Zulu Natal
- Makana & Rural Eastern Cape

Americas

- Canada
- Saskatchewan
- Greater Sudbury
- Montreal
- Toronto
- USA
- Grand Rapids
- North Texas
- Mexico
- West Jalisco
- Guatemala
- Columbia
- Bogota
- Brazil
- Curitiba-Parana

COP10 Satoyama Lunchbox and Ise-Mikawa Bay watershed

- *Three Rice Balls (Organic Rice in Echizen City, and Seaweed from Noma)
Pickled Plum Rice Ball (Kumano, Mie) *WARNING! Sour and Salty!
Mushroom (Buna-Shimeji and Shiitake) Rice Ball (Takayama/Ena)
Small Fish (Kounago) Rice Ball (Morozaki, Aichi) ★*
- *Chicken (Okumikawa-Kogen) with Miso Sauce (Okazaki, Aichi) ★*
- *Giant Clam in a Sea Bream Fish Cake (Irago, Aichi) ★*
- *Stewed Chestnut in Soy Sauce and Sugar (Seki, Gifu)*
- *Country Style Boiled Taro (Minokamo, Gifu)*
- *Boiled Radish (Hirugano Kogen, Gifu) with Sweet Miso Sauce (Okazaki, Aichi)*
- *Sweet and sour lotus (Tatsuta-Mura, Aichi)*
- *Pickled Radish (Oguchi-Cho, Aichi)*