



# 2021 Global ESD Youth Project Neuru Personal Portfolio

# 2021

## Global ESD Youth Project Neurol Personal Portfolio

---

**Issue Date** December 20, 2021

**Issued By** RCE Dobong-Gu | Dobong District Office

**Publisher** Lee Dong-jin (Mayor of Dobong-Gu)

### Lead Researcher

Dr. Hyunsoon Bae (Director for RCE Dobong-Gu)

### Co-Researchers

#### RCE Dobong-Gu (Korea)

Boyeong Kim (Teacher, Seoul Chodang Elementary School)

Yeongseon Song (Teacher, Seoul Changgyeong Elementary School)

Heebyeon Nam (Teacher, Seondeok High School)

#### RCE Hangzhou (China)

Hao Xin (Vice Director of RCE Hangzhou, Secretary-general of Green Zhejiang)

Shu Dong (Deputy secretary-general of Green Zhejiang)

Shaojie Huang (Teaching assistant)

Jiayi Fang (Teaching assistant)

#### RCE Kitakyushu (Japan)

Prof. Miki Tsukamoto (Seinan Jo Gakuin University)

#### RCE Srinagar (India)

Dr. Abdhesh Kumar Gangwar (Coordinator, Focal Point)

### Research Collaboration

Cheolwon Kweon (Director of Sustainable Development Division)

Heeyeon Jung (Sustainable Development Team Leader)

**Design** Soomin Jo (Primo Design)

### Inquiries

RCE Dobong-Gu | Sustainable Development Division, Dobong District Office

(☎ +82-2-2091-4814, bhs0110@dobong.go.kr)

---



# RCE Dobong Global ESD Youth Project Neuru



## Contents

### 01. Overview of Project Neuru

### 02. Design of Project Neuru

### 03. Operation of Project Neuru

- **Session 1:** Orientation
- **Session 2:** Theory Lecture – About Photo-voice Research Method
- **Session 3:** How Much Do We Know about Hamburgers?
- **Session 4:** Finding a Hamburger Restaurant in My Community
- **Session 5:** Hamburger Connection
- **Session 6:** Making a Good Hamburger
- **Session 7:** Let's Get a Good Hamburger!
- **Session 8:** Completion Ceremony of the Global ESD Youth Project Neuru Season I

### 04. In Remembering 2021 Project Neuru

- A letter from RCE Srinagar

### 05. Research Participant Activity Collection







01.

# Overview of Project Neuru

### Promotion Basis

- Dobong-Gu Sustainable Development Ordinance Article 22 (Education, Public Relations, etc.)
- 2021 RCE Dobong 2nd Year Project Promotion Plan [Sustainable Development Division-836 (February 4, 2021)]

### Promotion Background

- The future generation, youths, should be able to recognize sustainability in their lives, practice and take action by actively raising the awareness of global citizenship and participating in Education for Sustainable Development (ESD) based on lifelong learning.
- To this end, RCE Dobong-Gu, which received the RCE certificate from the UN University in January 2021, based on the cultivation of 'ecological literacy'\* and 'glocal leadership'\*\*, is making efforts for the practice and action of various sustainable development.

\* **Ecological literacy:** It is the ability to live a sustainable life based on an understanding of the ecosystem.

\*\* **Glocal leadership:** It is the competence to think globally and act locally.

- In particular, the 2021 RCE Dobong-Gu is moving forward to the 'Project Neuru'\* for adolescents to freely discuss social issues and find answers by using the 'Photo-voice research method\*\*' by setting a major theme linked to various international issues in the global era based on the SDGs, and tries to lay the foundation for social problem-solving projects to cultivate ecological literacy and glocal leadership.

\* **Neuru:** This is a pure Korean word meaning 'for a long time without being driven heavily all at once'.

\*\* **Photo-voice research method:** This is a field-participatory research method that promotes change in the local community by revealing one's own voice and experience through photography.



## Features of Project Neu ru

- Although it is difficult to have face-to-face activities due to COVID-19, in order for domestic and foreign youths to participate in ESD activities smoothly, based on the nation's first Zoom platform, it is designed so that Project Neu ru can be carried out using ICT (padlet, etc.).
- By participating as research participants of the youths in Project Neu ru, it is designed to make sure that the final results of Project Neu ru can be linked to research reports for submission to the UN University.
- The worksheets of the research participants in each RCE city participating in Project Neu ru served as basic data for the photo-voice research, and based on this, the data is analyzed using text mining using R program (statistics program) and word cloud, and the various opinions of the research participants are examined in depth in connection with the research themes.





02.

# Design of Project Neuru

**Project Neuru Design** : February ~ April 2021

### Step.01

#### Project Neuru's Theme Selection

- The Truth of Hamburgers
- In connection with SDG 1-17, various issues related to hamburgers are carried out according to the worksheet

### Step.02

#### Development and utilization of worksheets for each session

- Creation of worksheets divided into sub-themes for each session on the 2021 research themes
- There is a lot of diversity (religion, culture, etc.) about hamburgers in each RCE city, so the contents are collected by the sub-theme and produced as a worksheet that participating students can understand and perform.

※ Worksheet design advice

Dr. Yuree Kim (Research fellow, Seoul Education Policy Institute, Seoul Education Research & Information Institute)

Dr. Abdhesh Kumar Gangwar (RCE Srinagar, India)

Aoi Yayama (Student, Kitakyushu City University, RCE Kitakyushu, Japan)

**Project Neuru Operation** : May ~ December 2021 (with completion ceremony of 8 session)  
Once a month on Saturdays (09:00, 10:00 KST)

**Operated by being divided into elementary, middle, and high school**

**Elementary school students group** : Once a month, Saturday, 09:00~10:00

**Junior high school/Middle school, High school and College students group** :  
Once a month, Saturday, 10:00~11:00

\* Determination of Project Neuru operating hours considering the time difference of each RCE city

**Participants** : 61 domestic and foreign youths from 5 countries (28 schools)

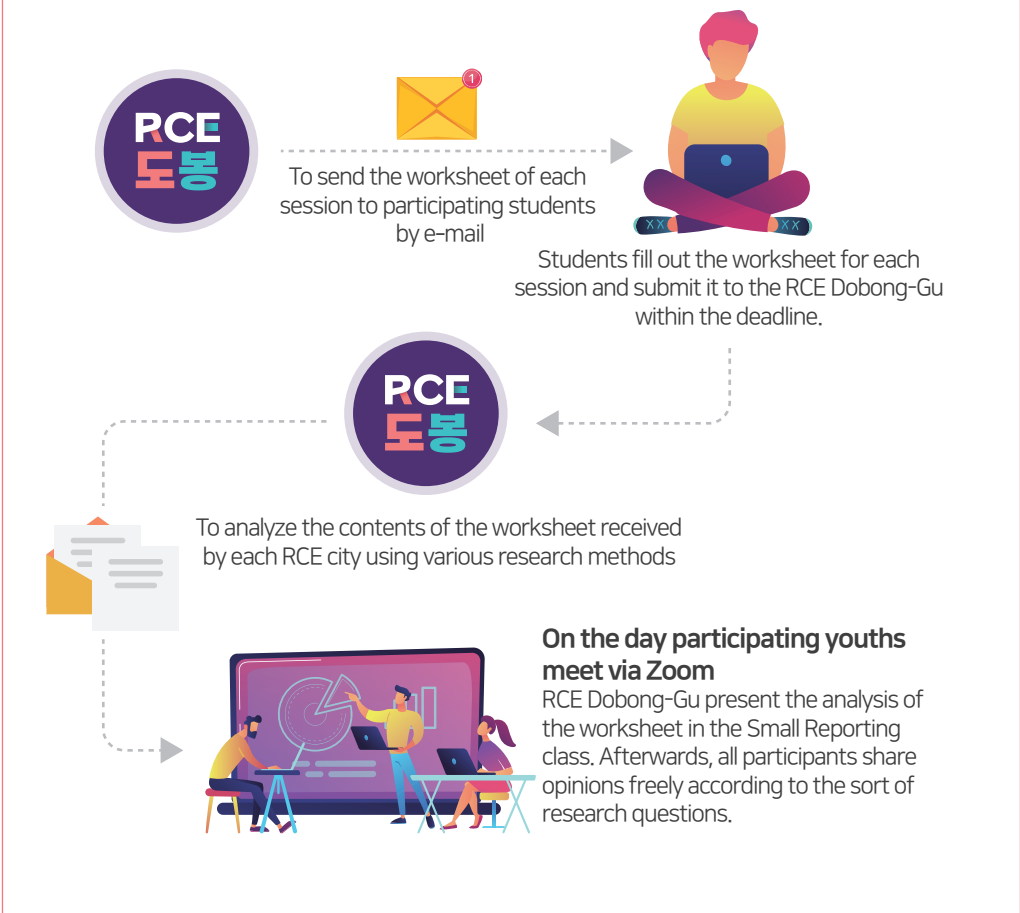
\* Based on the Youth Activity Act: Ages 9-24

**Participating countries** : RCE Dobong-Gu (Korea), RCE Hangzhou (China), RCE Kitakyushu (Japan), RCE Srinagar (India), Mason City (USA)

※ Mason City (USA) is connected as they have a high interest in ESD.

※ RCE Srinagar (India) joined the 'Global ESD Youth Project Neuru Open Seminar (DEOS 2021)' due to their serious COVID-19 situation.

## Development of Project Neu ru operation







03.

# Operation of Project Neuru

Session 1: Orientation

Session 2: Theory Lecture - About Photo-voice Research Method

Session 3: How Much Do We Know about Hamburgers?

Session 4: Finding a Hamburger Restaurant in My Community

Session 5: Hamburger Connection

Session 6: Making a Good Hamburger

Session 7: Let's Get a Good Hamburger!

Session 8: Completion Ceremony of the Global ESD Youth Project Neuru  
Season I

## Operation of Project Neuru

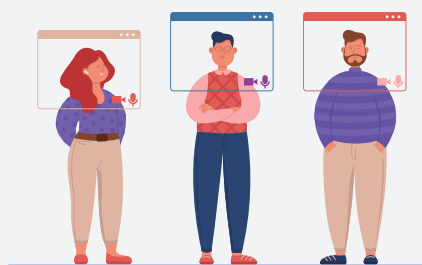
**Operating Period** : May ~ December 2021

### ■ Target: Elementary school students group

Session	Main contents	Date / Time	Required time	Progress method
1st	<b>[Orientation]</b> - Welcome greetings - Explanation of Project Neuru - Participants' greetings	Saturday, May 22 09:00~10:30 (KST)	60min	Zoom
2nd	<b>[Theory lecture]</b> - Research method for Photo-voice - How do I take photos well? - Q&A * Instructor: Dr. Minseo Han (Research Prof., Soonchunhyang University)	Saturday, June 12 09:00~10:00 (KST)	60min	Zoom Support for interpretation Korean↔English, Chinese
Submit	Submission of 3rd session worksheet	Sunday, June 27 24:00 (KST)	[Submission to e-mail] magandang2000@gmail.com	
3rd	<b>[Sub-Topic]</b> How much do we know about hamburgers?	Saturday, July 10 09:00~10:00 (KST))	60min	Zoom/ Support for interpretation Korean↔English
Submit	Submission of 4th session worksheet	Sunday, July 25 24:00 (KST)	[Submission to e-mail] magandang2000@gmail.com	
4th	<b>[Sub-Topic]</b> Fining a hamburger restaurant in my community.	Saturday, August 14 09:00~10:00 (KST)	60min	Zoom/ Support for interpretation Korean↔English
Submit	Submission of 5th session worksheet	Sunday, August 29 24:00 (KST)	[Submission to e-mail] magandang2000@gmail.com	
5th	<b>[Sub-Topic]</b> Hamburger connection (Read the article)	Saturday, September 11 09:00~10:00 (KST)	60min	Zoom/ Support for interpretation Korean↔English
Submit	Submission of 6th session worksheet	Sunday, September 26 24:00 (KST)	[Submission to e-mail] magandang2000@gmail.com	
6th	<b>[Sub-Topic]</b> Making a good hamburger	Saturday, October 16 09:00~10:00 (KST)	60min	Zoom/ Support for interpretation Korean↔English
Submit	Submission of worksheet	Sunday, October 31 24:00 (KST)	[Submission to e-mail] magandang2000@gmail.com	
7th	<b>[Sub-Topic]</b> Let's get a good hamburger!	Saturday, November 13 09:00~10:00 (KST)	60min	Zoom/ Support for interpretation Korean↔English
8th	<b>[Final report]</b> - Host a photo exhibition - Participation in the completion ceremony - Receive personal portfolios - Submission of research report to UN University	December 21 (Tue) 15:00 (KST)	Dobong District Office Gangshong Hall (10th floor)	

■ **Target: Junior high school/middle school, high school and college students group**

Session	Main contents	Date / Time	Required time	Progress method
1st	<b>[Orientation]</b> - Welcome greetings - Explanation of Project Neuru - Participants' greetings	Saturday, May 22 09:00~10:30 (KST)	60min	Zoom
2nd	<b>[Theory lecture]</b> - Research method for Photo-voice - How do I take photos well? - Q&A * Instructor: Dr. Minseo Han (Research Prof., Soonchunhyang University)	Saturday, June 26 09:00~10:00 (KST)	60min	Zoom Support for interpretation Korean↔English, Chinese
Submit	Submission of 3rd session worksheet	Sunday, June 27 24:00 (KST)	[Submission to e-mail] magandang2000@gmail.com	
3rd	<b>[Sub-Topic]</b> How much do we know about hamburgers?	Saturday, July 10 09:00~10:00 (KST))	60min	Zoom/ Support for interpretation Korean↔English
Submit	Submission of 4th session worksheet	Sunday, July 25 24:00 (KST)	[Submission to e-mail] magandang2000@gmail.com	
4th	<b>[Sub-Topic]</b> Fining a hamburger restaurant in my community.	Saturday, August 14 09:00~10:00 (KST)	60min	Zoom/ Support for interpretation Korean↔English
Submit	Submission of 5th session worksheet	Sunday, August 29 24:00 (KST)	[Submission to e-mail] magandang2000@gmail.com	
5th	<b>[Sub-Topic]</b> Hamburger connection (Read the article)	Saturday, September 11 09:00~10:00 (KST)	60min	Zoom/ Support for interpretation Korean↔English
Submit	Submission of 6th session worksheet	Sunday, September 26 24:00 (KST)	[Submission to e-mail] magandang2000@gmail.com	
6th	<b>[Sub-Topic]</b> Making a good hamburger	Saturday, October 16 09:00~10:00 (KST)	60min	Zoom/ Support for interpretation Korean↔English
Submit	Submission of worksheet	Sunday, October 31 24:00 (KST)	[Submission to e-mail] magandang2000@gmail.com	
7th	<b>[Sub-Topic]</b> Let's get a good hamburger!	Saturday, November 13 09:00~10:00 (KST)	60min	Zoom/ Support for interpretation Korean↔English
8th	<b>[Final report]</b> - Host a photo exhibition - Participation in the completion ceremony - Receive personal portfolios - Submission of research report to UN University	December 21 (Tue) 15:00 (KST)	Dobong District Office Gangshong Hall (10th floor)	



# Sessions of the 420 minutes we spent together

## Session 1

### Orientation

Will it be possible to get everyone together with Zoom?

The orientation started with full tension and excitement. Although there were some technical problems with the zoom connection, the first steps went well.



## Session 2

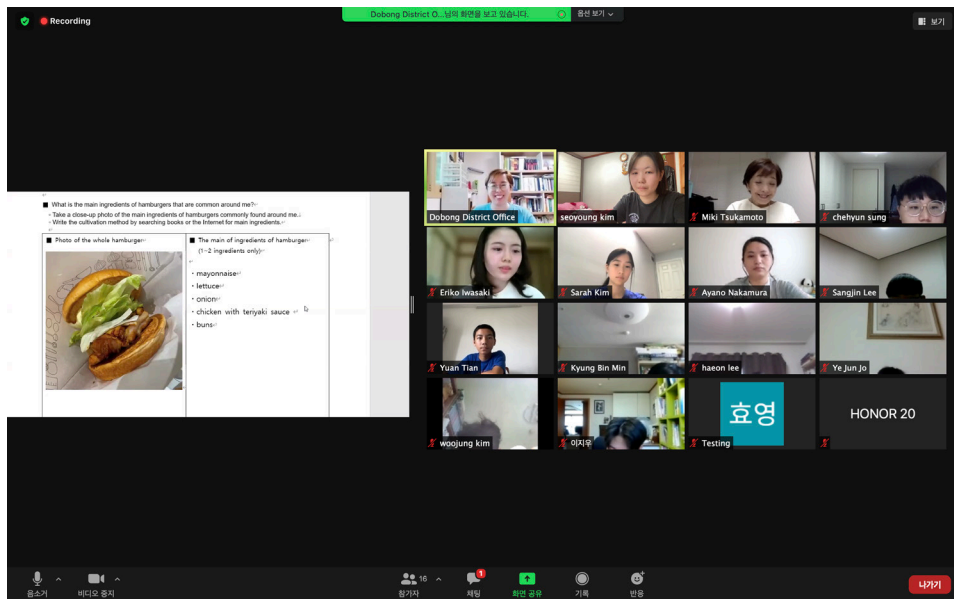
Theory Lecture  
- About Photo-voice Research Method

The screenshot shows a Zoom meeting interface. The main window displays a presentation slide titled "Photo Voice" and "My Little Story". The slide contains text in Korean and English, along with illustrations of a person and a bird. The Zoom interface shows a list of participants on the right, including Minseok Kang, shaojie huang, Shiori Nakamura, and Newt Chen. The chat window on the bottom right shows a message from Dobong-Gu, please change your naem in English :).

To study the photo-voice, we need to understand how to take pictures.

We had time to understand photography and photo-voice research method through lectures by research professor Han Min-seo of Soonchunhyang University.





The research participants shared their opinions based on a worksheet containing pictures of the sub-topic, 'How much do we know about hamburgers?'

#### [Research Question]

- 1) Write down the five words that come to your mind when you think of 'hamburger'.
- 2) What hamburgers are common around me?
- 3) What is the main ingredients of hamburgers that are common around me?

※ Research data: The Session 3 worksheet of research participants



## Session 4

### Finding a Hamburger Restaurant in My Community

Research participants shared their opinions by 'finding a local hamburger restaurant', displaying a hamburger shop in your community as a sub-topic, selecting one of the area's most famous hamburger places, and taking pictures of posters hanging on the selected hamburger restaurant.

#### [Research Question]

- 1) How many hamburger restaurants are there in your community?
- 2) What do you think of the advertisements (poster, etc.) of the hamburger restaurant in your community?


※ Research data: The Session 4 worksheet of research participants







2021. RCE Dobong-Gu  
Global ESD Youth Project Neuru




4th session

## Fine a hamburger restaurant in my community

Saturday, August 14, 2021

RCE Dobong-Gu



Dobong District Office

seoyoung kim

Miki Tsukamoto

cheyhun sung

Shiori Nakamura

Lee Jiwoo

Project Neuru

Abdresh Kumar Gang...

刘佳宁

오디오 현결

Research Question 2

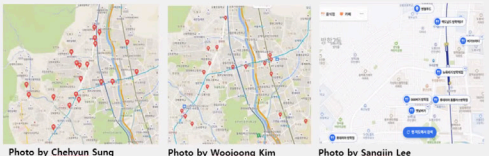


Photo by Chehyun Sung

Photo by Woojoong Kim

Photo by Sangjin Lee




Photo by Jiwoo Lee

Dobong District Office

seoyoung kim

Miki Tsukamoto

Project Neuru

Shiori Nakamura

刘佳宁


Eriko Iwasaki

Abdresh Kumar Ga...

cheyhun sung

Sarah Kim

The Result of Research Question 2



Dobong District Office

seoyoung kim

Miki Tsukamoto

cheyhun sung

Shiori Nakamura

Lee Jiwoo

Project Neuru

Abdresh Kumar Ga...

刘佳宁

Eriko Iwasaki

Sarah Kim

## Session 5

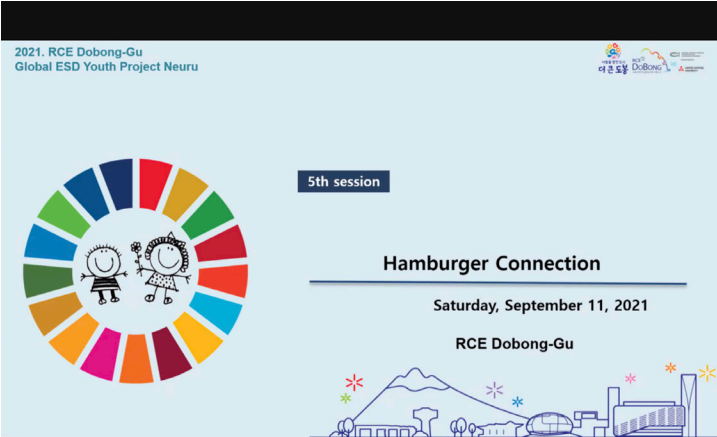
## Hamburger Connection


After reading an article, Norman Myers (1981)'s Hamburger Connection, they expressed their thoughts and made a hamburger mind map based on it. Specially, Dr. Abdhesh Kumar Gangwar of RCE Srinagar, India, gave a special lecture on local food and sustainability in India for junior high school/middle school, high school and college students group.

### [Research Question]

- 1) What do I think about hamburger connections after reading an article by Norman Myers (1981)?
  - If you agree with the hamburger connection, why do you think so?
  - If you don't agree with the hamburger connection, why do you think so?
- 2) Creating a mind map based on hamburger diversity.

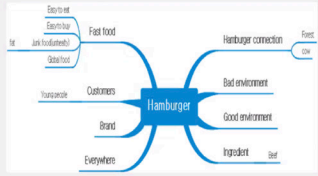
※ Research data: The Session 5 worksheet of research participants



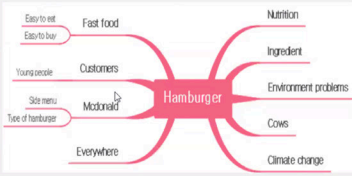


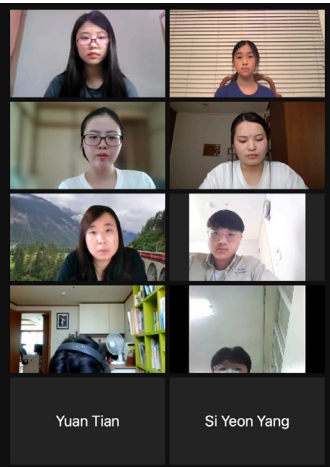
### Comparison

#### Elementary school students



#### Middle school, High school, College students





## RCE Dobong-Gu ESD Open Seminar (DEOS 2021)

- **Purpose** : To hold a special open seminar in connection with the Project Neuru session 5
- **Topic** : Food and Sustainability
- **Target** : People who are interested in sustainable development and education for sustainable development
- **Operation method** : Zoom platform
- **Language** : English (simultaneous interpretation supported)
- **Program**
  - Introduction of the RCE Dobong-Gu ESD open seminar
  - **Session 1 assignment presentation** - Let's speak up!
    - Speaker 1: Lee Raena (Seoul Changdo Elementary School | Dobong-Gu)
    - Speaker 2: Sarah Kim (William Mason High School | Mason City, USA)
  - **Session 2 Special Lecture** - Food and Sustainability
    - Speaker : Dr. Abdhesh Kumar Gangwar (Coordinator & Focal Point | RCE Srinagar, India)

58 people from five countries participated in the 'RCE Dobong-Gu ESD Open Seminar (DEOS 2021)', which was held as the first webinar in Dobong-Gu due to COVID-19, and it was a time when we shared the thoughts of the '17 goals to change the world' starting from 'me' and thinking about sustainable food.

**2021. DEOS**  
RCE 도봉 ESD 공개 세미나  
**9.28**  
15:00~16:10

**프로젝트 느루가 준비한 첫번째 공개 세미나**  
주제: 음식과 지속가능성

**프로그램**

**Session 1**  
**목소리를 높이자요**  
\* 이레나 서울 철도초등학교 | 서울 도봉구  
\* 세라킵 윌리엄 메이슨 고등학교 | 오하이오 주, 미국

**Session 2**  
**특별강연**  
\* 아무다쉬 쿠키 강위 박사  
RCE 스리나카르, 인도

**일시** 2021. 09. 28. (화) 15:00 ~ 16:10  
**대상** 지속가능발전교육(ESD)에 관심있는 사람 누구나  
**연락처** 비내면 (Zoom), 한국어 통역 제공  
**신청방법** 온라인 신청 작성  
**문의처** 도봉구청 지속가능발전과 ☎ 02-2091-4814

**참가신청 QR코드**

**SUSTAINABLE DEVELOPMENT GOALS**







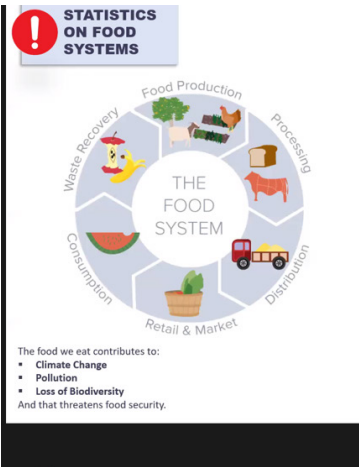
**2021.**  
**국제 ESD 유스 프로젝트 느루 세미나**  
**2021. Dobong ESD Open Seminar**



일사: 2021. 9. 28.(화) 15:00~16:10  
주관·주최: 도봉구청(RCE 도봉구)

Date: September 28, 2021  
Time: 15:00~16:10 (KST)





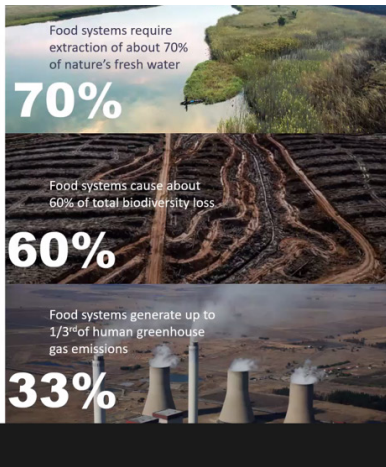
**STATISTICS ON FOOD SYSTEMS**

**THE FOOD SYSTEM**

The food we eat contributes to:

- Climate Change
- Pollution
- Loss of Biodiversity

And that threatens food security.



Food systems require extraction of about 70% of nature's fresh water

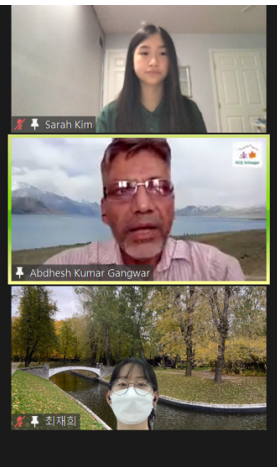
**70%**

Food systems cause about 60% of total biodiversity loss

**60%**

Food systems generate up to 1/3 of human greenhouse gas emissions

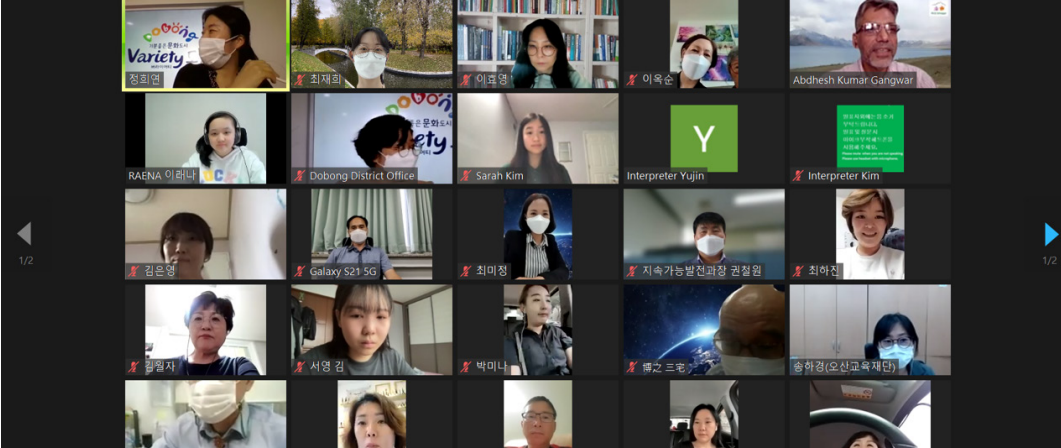
**33%**



Sarah Kim

Abdhesh Kumar Gangwar

최재희



1/2

1/2

## Session 6

### Making a Good Hamburger

The research participants thought and talked about what ingredients would be needed for the future hamburgers.


In addition, we tried making it for a good hamburger.

[Research Question]

- 1) What do I think the essential ingredients to make a good hamburger?
- 2) Making a good hamburger.

※ Research data: The Session 6 worksheet of research participants

2021. RCE Dobong-Gu  
Global ESD Youth Project Neu ru




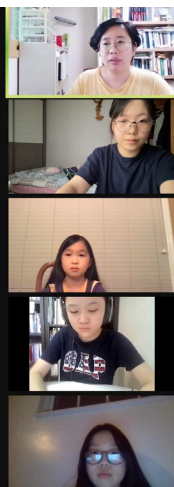
6th session

### Making a good hamburger

Saturday, October 16, 2021


RCE Dobong-Gu

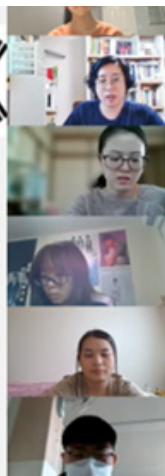




**Lee Sangjin**

1. textured soy protein patty
2. tomato
3. cheese
4. onion
5. pickle





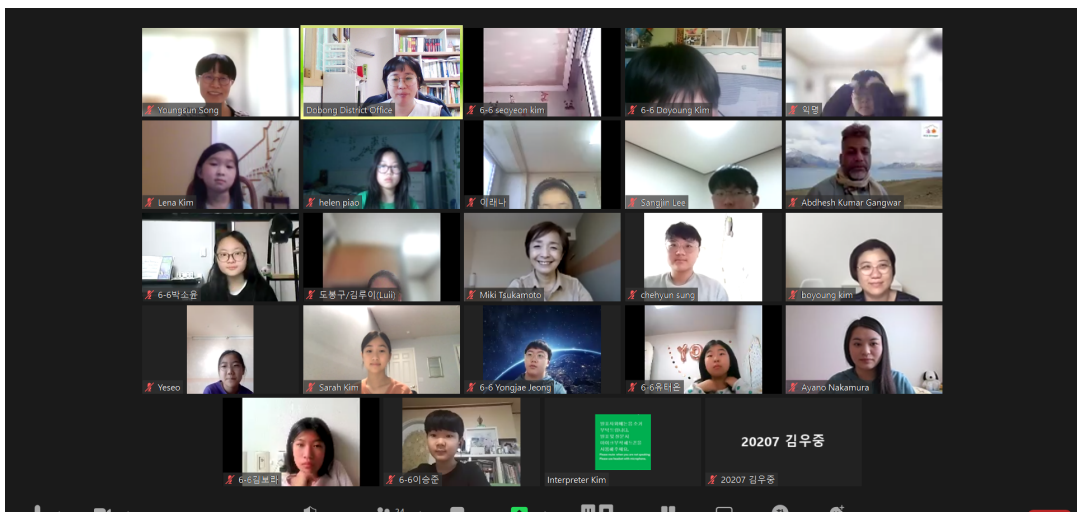
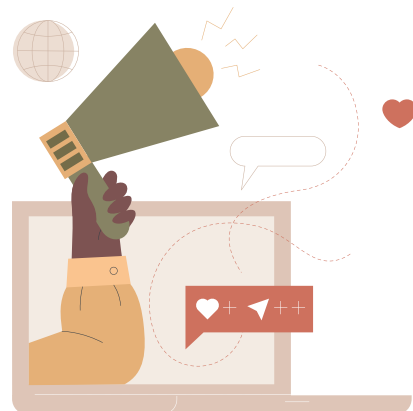
## Session 7

## Let's Get a Good Hamburger!



Research participants created an advertisement to promote good hamburgers. The elementary school students group produced eight video advertisements and two posters, and the junior high school/middle school, high school and college students group produced one poster.

※ Research data: The Session 7 worksheet of research participants





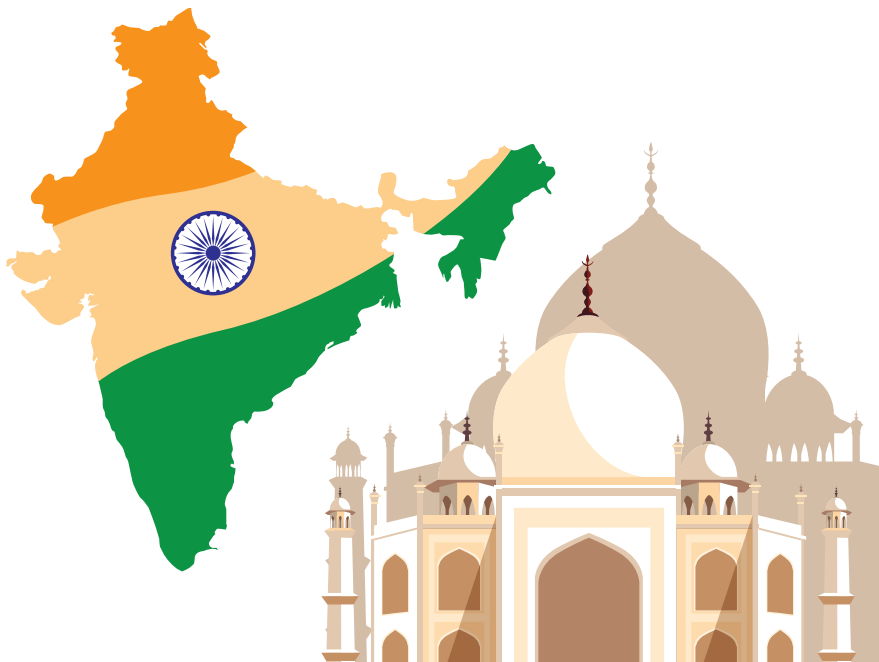
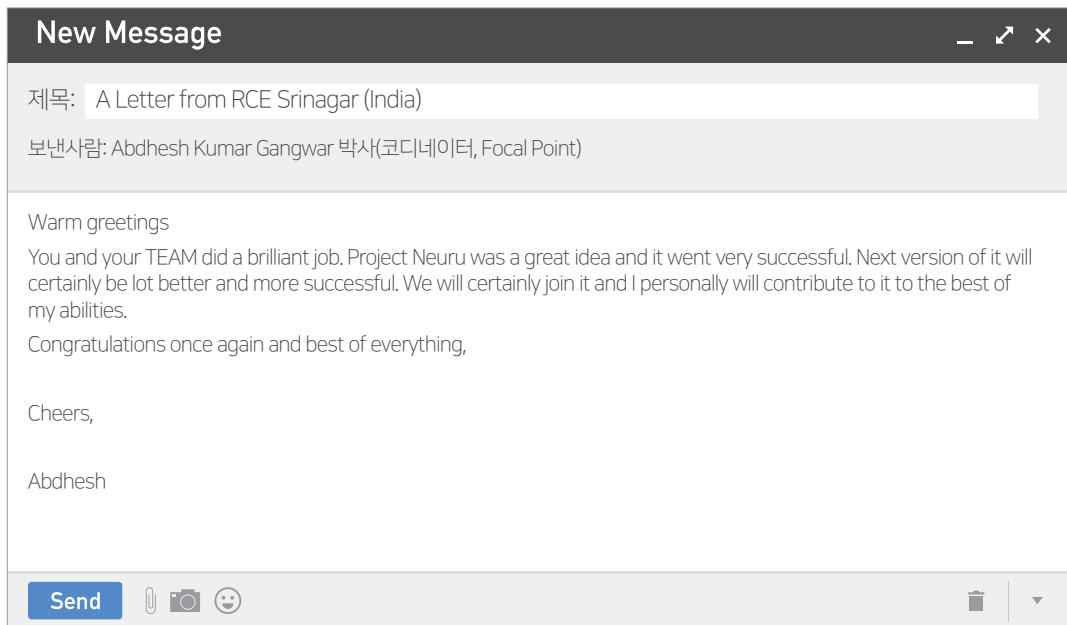




04.

# In Remembering 2021 Project Neuru

# In Remembering 2021 Project Neuru



05.

# Research Participant Activity Collection

## Worksheet (3rd session)

Name of City	Mason, Ohio (USA)	Name	Sarah Kim
Sub-topic	How much do we know hamburgers?	School/Grade	William Mason High School (9)

### Research question 1 ?

**Write down the five words that come to your mind when you think of 'hamburger'.**  
**Noun, adjectives, verbs don't matter.**

Juicy  
 Buttery  
 Savory  
 Delicious  
 Joyful

### Research question 2 ?

**What hamburgers are common around me?**

- Take four pictures that hamburgers common around me.
- Photo 3, photo 4: It's okay to take pictures with family and friend who eat hamburgers.



### Research question 3 ?

#### What is the main ingredients of hamburgers that are common around me?

- Take a close-up photo of the main ingredients of hamburgers commonly found around me.
- Write the cultivation method by searching books or the Internet for main ingredients.

#### Photo of the whole hamburger



#### The main of ingredients of hamburger (1~2 ingredients only)

Beef patty  
Bread  
Cheese  
Tomatoes  
Lettuce  
Bacon  
Pickles

#### Beef patty

Cows eat grass and grow into adults. They get killed for beef. The manufacturers sell the beef to companies which make hamburgers.

#### Bacon

Pigs grow into adults and get killed for meat. The meat gets sliced into bacon. The bacon is shipped to manufacturers and companies for cooking.

#### Buns

Wheat is made into flour and mixed with other ingredients to make dough. The dough is made/baked into buns in a factory. The factory ships the bread to restaurants and stores for hamburgers.

#### Tomatoes/Lettuce

The vegetables are grown on a farm and harvested. They are sent to stores and restaurants to sell and make into food.

#### Pickles

The cucumbers are grown on a farm and sent to a factory. They are cut and marinated in the juice to become pickles. The pickles are sent to the stores for cooking.

## Worksheet (4th session)

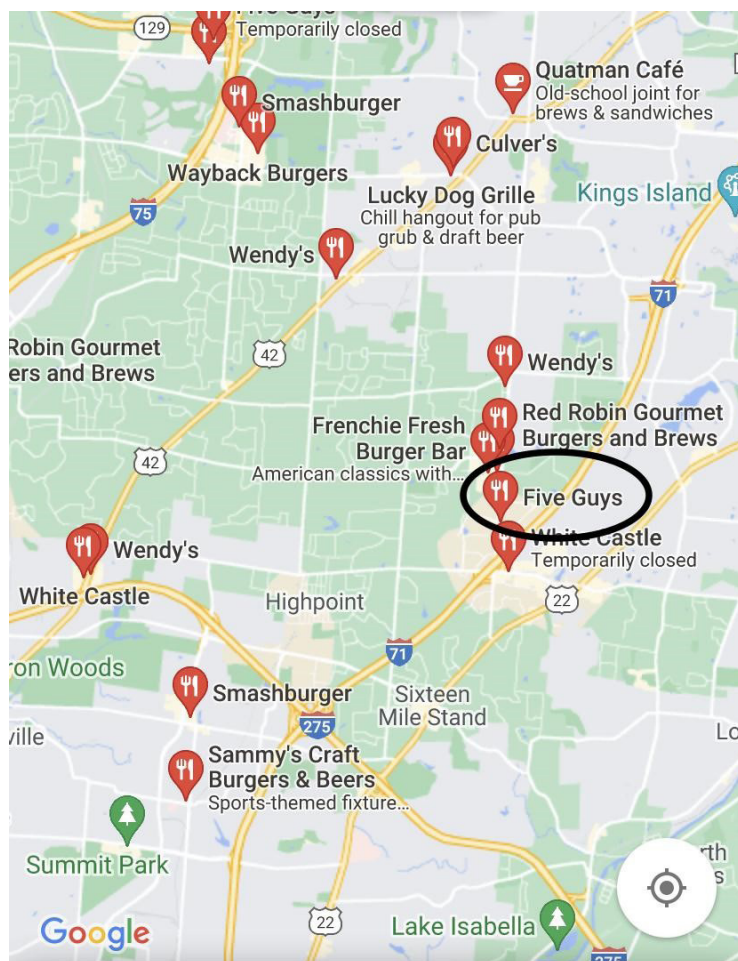
Name of City	Mason, Ohio (USA)	Name	Sarah Kim
Sub-topic	Finding a Hamburger Restaurant in My Community	School/Grade	William Mason High School (9)

### Research question 1 ?

#### How many hamburger restaurants are there in my community?

- Marking hamburger restaurants on a map of your community.
- Available for Google Maps (satellite maps)
- Free marking of hamburger restaurants (brand name, hamburger restaurant photo, etc.)

[Hamburger map]



## Research question 2 ?

**What do you think of the advertisements (poster, etc.) of the hamburger restaurant in your community?**

- Pick one of the most famous hamburger restaurants in our community and take a picture.
- Taking a picture of a poster in front of a hamburger restaurant.

**[Photo of a famous hamburger restaurant in my community]**



**Why do you think this hamburger restaurant is famous? (within 50 words)**

I think FiveGuys is famous because it has really fresh and delicious ingredients. It is freshly cooked and has lots of toppings to choose from so it is not frozen and reheated like other places. Their burgers are not too salty and have lots of calories that fill you up. They also have bigger fries that they make in store and give free salted peanuts to snack on. Although it's expensive, I think the freshness is worth it.

**[Hamburger restaurant poster photo]**



**Write a sentence that comes to mind when you see your hamburger restaurant poster.**  
**Ex) I want to buy it right now!**

These burgers sound amazing! Let's order them!

## Worksheet (5th session)

Name of City	Mason, Ohio (USA)	Name	Sarah Kim
Sub-topic	Hamburger Connection	School/Grade	William Mason High School (9)

### Research question 1

**What do I think about hamburger connections after reading an article by Norman Myers (1981)?**

- If you agree with the hamburger connection, why do you think so?
- If you don't agree with the hamburger connection, why do you think so?

**Read an article by Norman Myers (1981) and write my thoughts on hamburger connections. (within 100 words)**

After reading this article, I thought a lot about the meat that we so easily get. I think that the impact that meat importation has on the environment is very concerning. Raising cows to be slaughtered takes a lot of land and resources. The greenhouse gases they release cause rapidly increasing global warming and climate change.

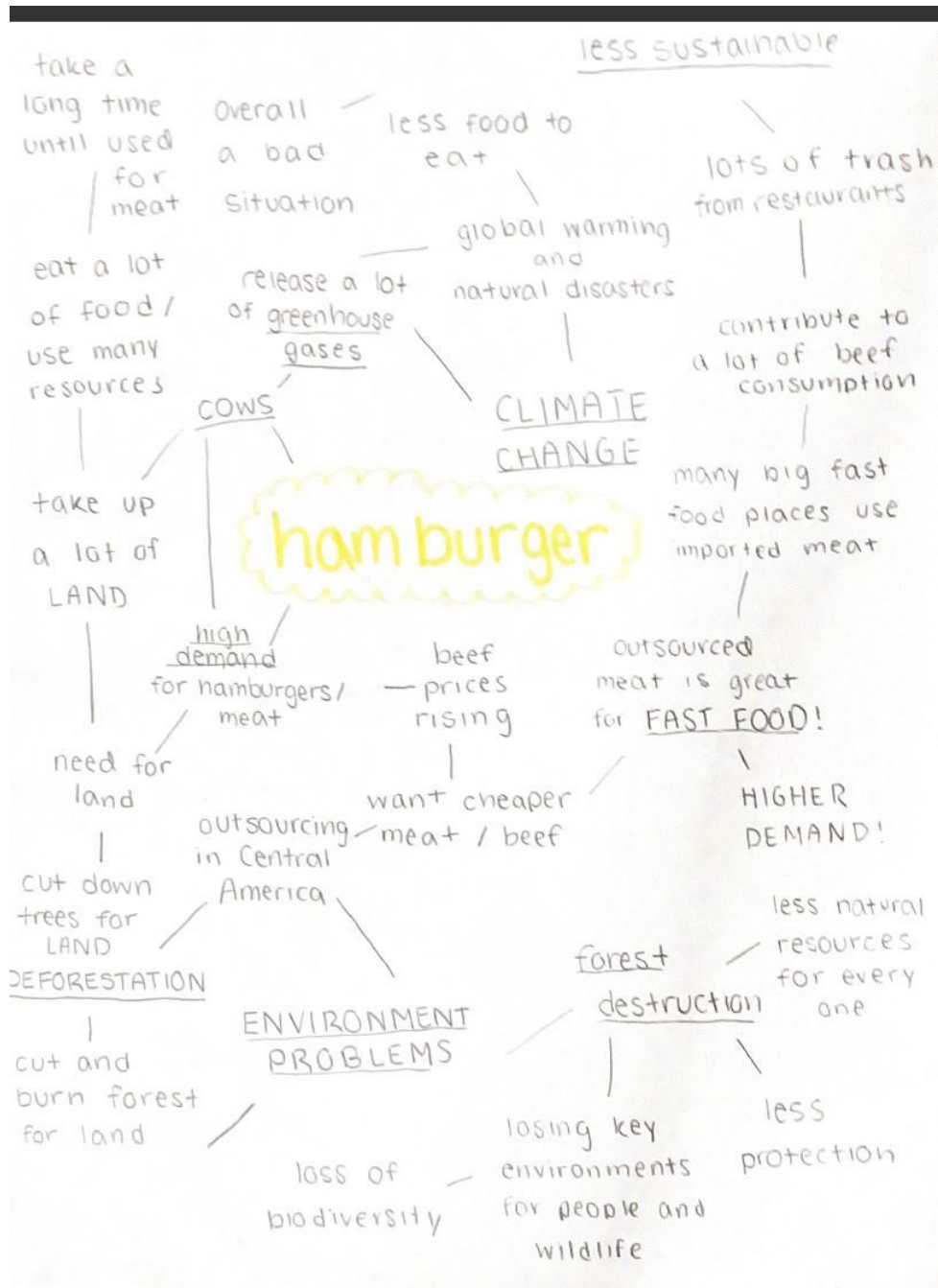
I've seen a lot of things happen over the past few months on the news. Wildfires are blazing and floods and hurricanes are frequently devastating cities. There are droughts and freezing winters causing food prices to rise every day. Because humans are not taking sustainable actions in the ways they live, the environment is deteriorating.

I believe that even with small steps, I can create a change. America eats a lot of hamburgers so I am going to start being more conscious of my beef intake. And maybe I'll start eating more tofu veggie burgers. :)



## Research question 2 ?

Creating a mind map based on hamburger diversity.



## Worksheet (6th session)

Name of City	Mason, Ohio (USA)	Name	Sarah Kim
Sub-topic	Making a Good Hamburger	School/Grade	William Mason High School (9)

### Research question 1



#### What do I think the essential ingredients to make a good hamburger?

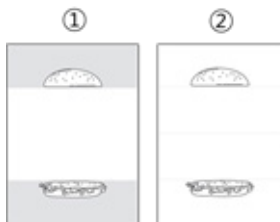
- Write down 5 essential ingredients to make a good hamburger.
- Write the name of the ingredients. (eggs, lettuce, etc.)

My 5 essential ingredients for a good hamburger are chicken/meat, lettuce, pickles, cheese, and onions.

## Research question 2 ?

You can choose 2 ways to make a good hamburger. You can select one of two, or both.

### Using hamburger craft



1. You can choose ① or ②
2. Draw the ingredients you want to draw in the hamburger.
3. Fold along the dotted line.
4. You can make a good hamburger!
5. Show your craft to your friends!

### Making a real good hamburger

1. Make your own hamburgers and take photos
2. Please show your hamburgers to your friends!

