

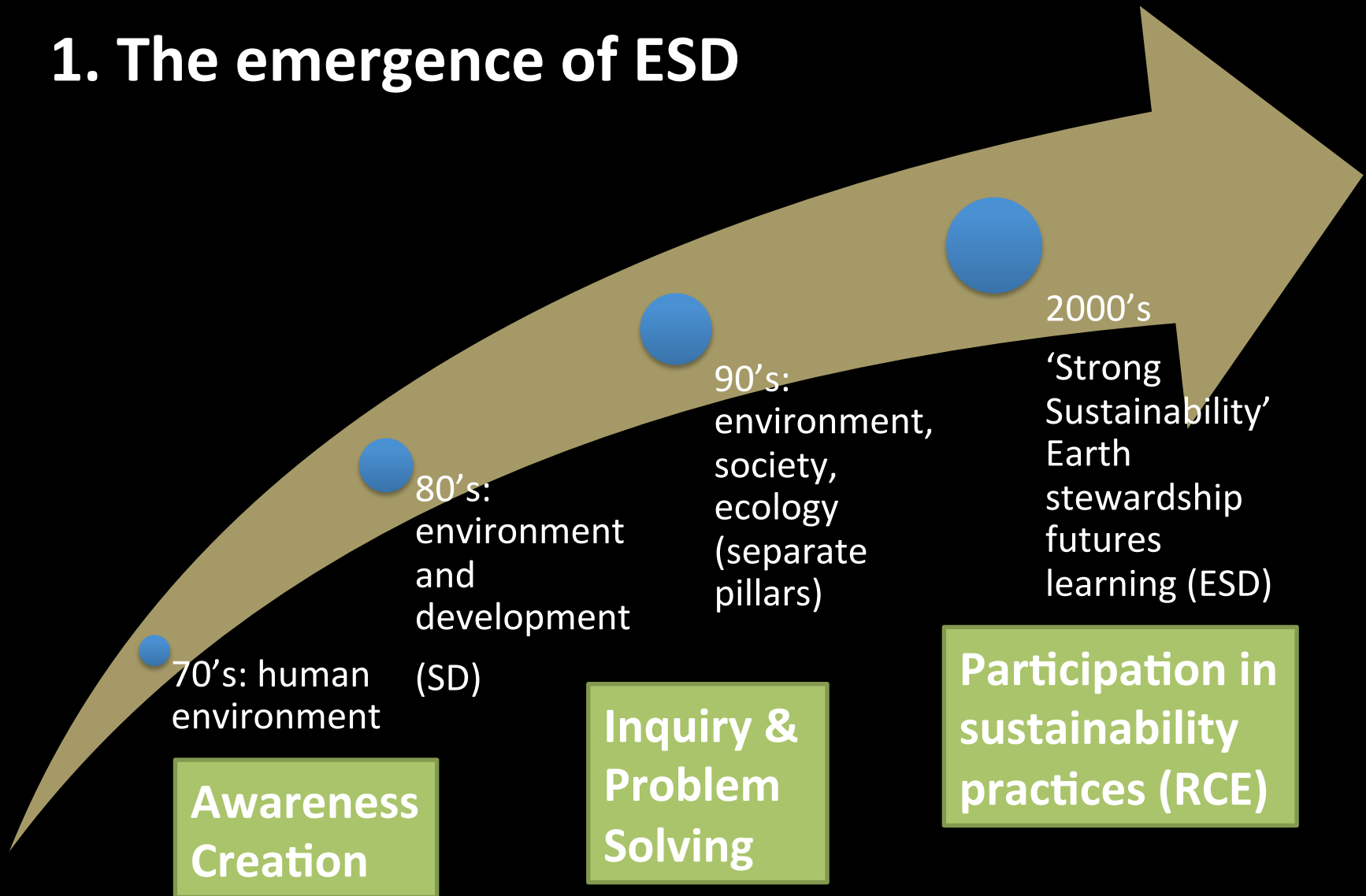
ESD and RCEs : Charting our way forward

1. Where have we come from?
2. How are our models developing?
3. Where are we going?

Rob O'Donoghue

Makana RCE

1. The emergence of ESD

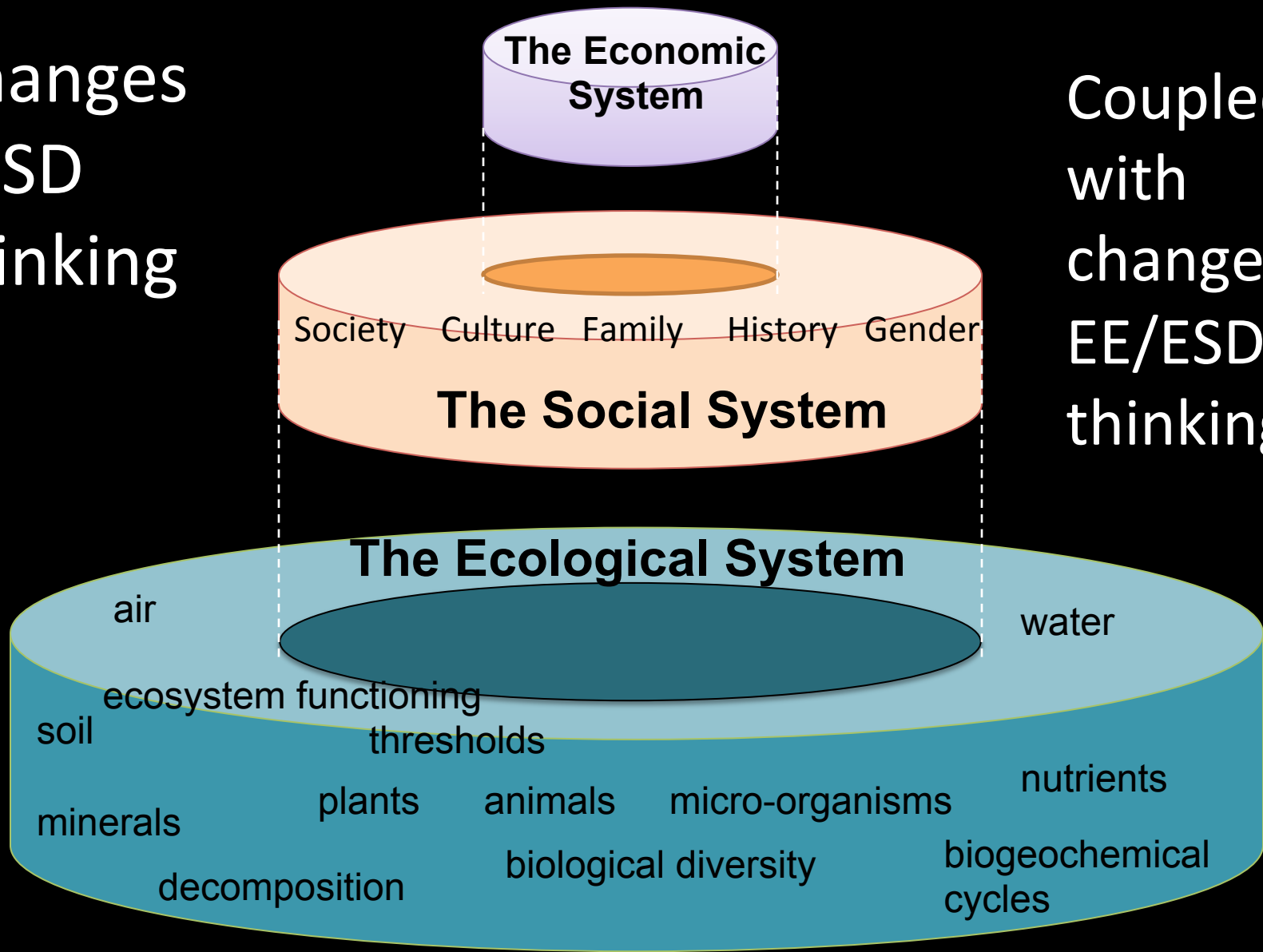


RCE: Multi-stakeholder - Community, Education / Training and Public Awareness

An experiment in social learning (Harold Glasser)

Changes
in SD
thinking

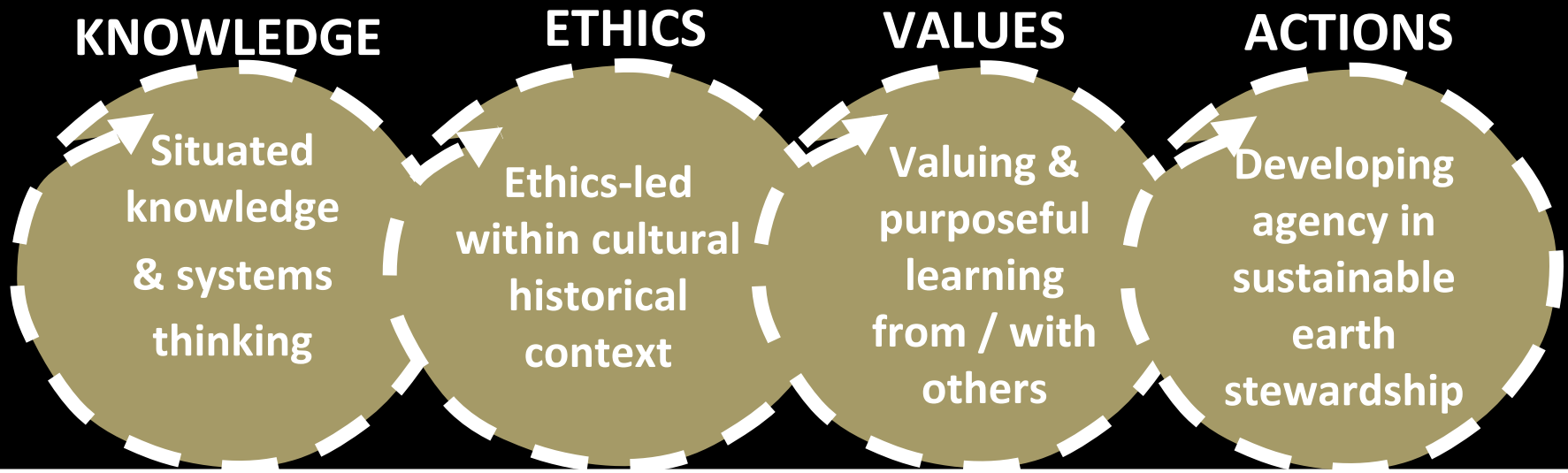
Coupled
with
changes in
EE/ESD
thinking



Source: Hahn, 2012

ESD: AN EXPANDING CONCEPT

2. ESD, an expanding concept.....



Expanding concept: 'Get-together' / 'getting buy-in'

Participatory / co-engaged practices

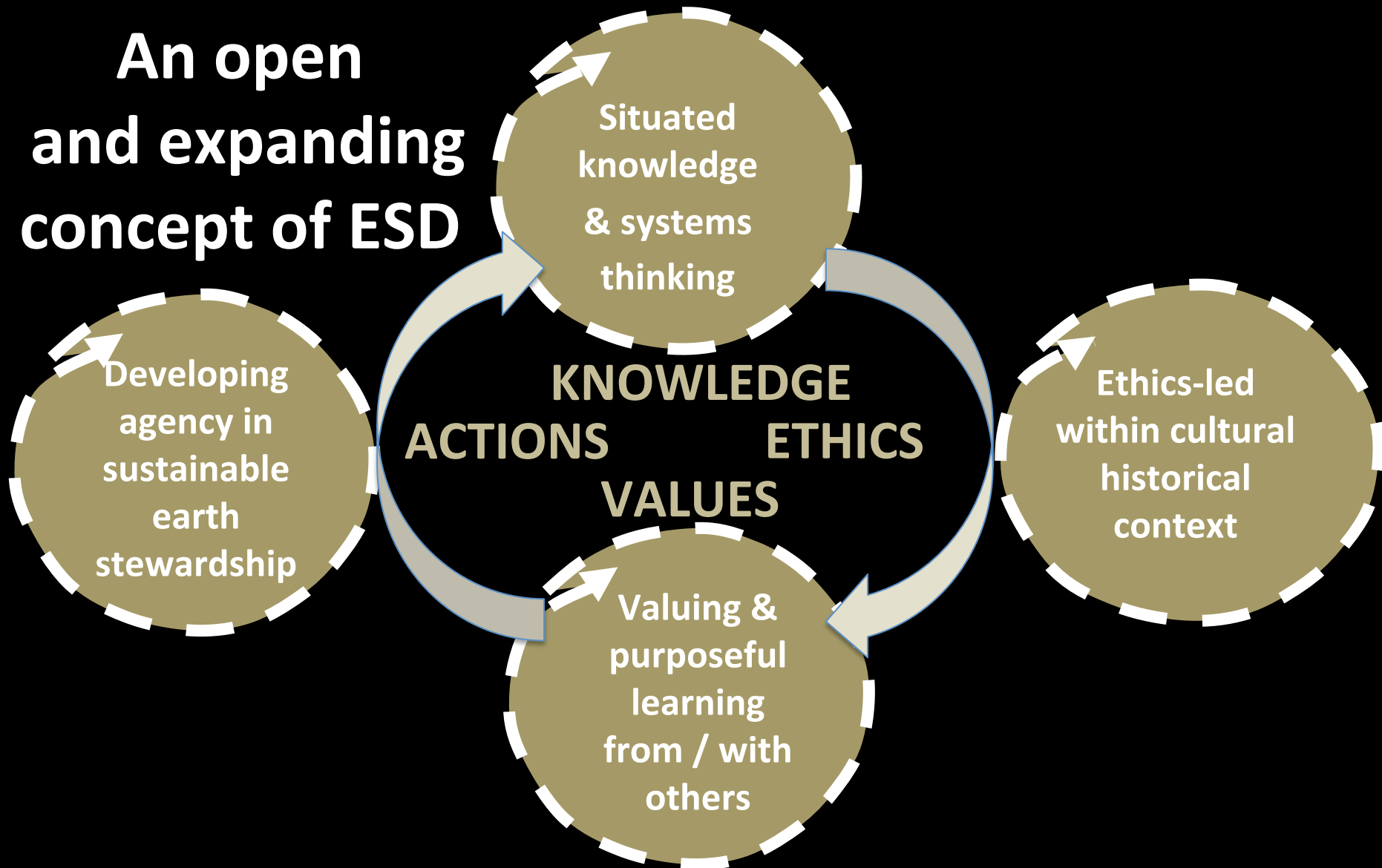
Ethical, situated and transformative with ESD competences specified

Early foundational concept: 'Get-to' / 'get-the-message-across'

Create **awareness** and foster **values, knowledge, skills, attitudes** and **behaviours** (practices)

...which are based on and instill respect for human rights, social justice, diversity, gender equality and environmental sustainability (UNESCO, 2014).

An open and expanding concept of ESD



**Purposeful learning engagement
in sustaining valued practices and
earth stewardship for the common good**

3. Responding to the GAP: Three rules of thumb

- Spreading the spirit of ESD
- Being gentle in our invitations to others
- Passing on the charm and value to the future